

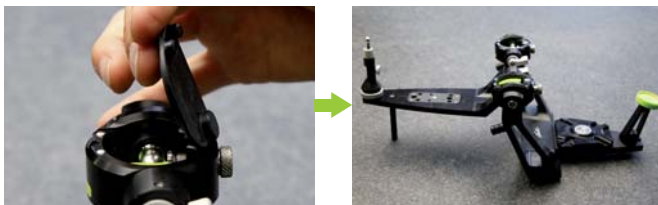
Glueing of the base plate in the PS1 articulator

Version: 14/03/2023 – Page 1 of 10



NOTE: By using the positioning pins, the base plate can be adjusted to the upper part of the articulator also without Adjusting Key PS1. If several articulators of the same model are synchronised, the use of the Adjusting Key PS1 is necessary.

Open the articulator.



Remove the 2 coverages.



Pull the two clip tie sealings outwards and...

Glueing of the base plate in the PS1 articulator



4

take off the upper part of the articulator.



5

Open the two retraction screws.

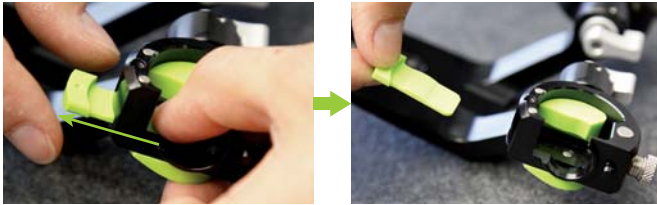


6

Exchange the green condylar path inserts with the grey ones.

Glueing of the base plate in the PS1 articulator

Version: 14/03/2023 – Page 3 of 10



In order to do that, push the green condylar paths to the front and exchange them with the grey ones.



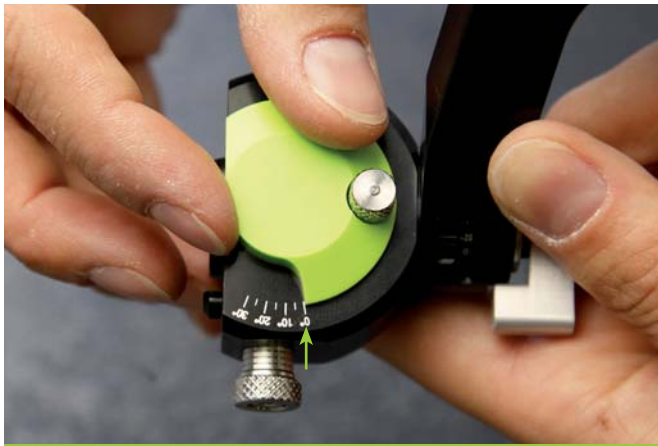
Open the upper two locking screws and remove them.



Remove the green condylar paths on the sides, exchange them with the grey ones and mount them with the locking screws.

Glueing of the base plate in the PS1 articulator

Version: 14/03/2023 – Page 4 of 10



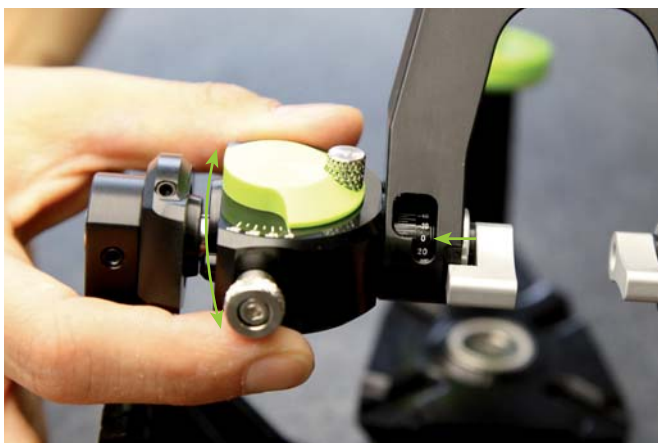
10

ATTENTION: before properly fixing the screws, make sure that the angle of the lateral condylar guidance is positioned at 0°!



11

Mount the upper part of the articulator on the condylar path balls.

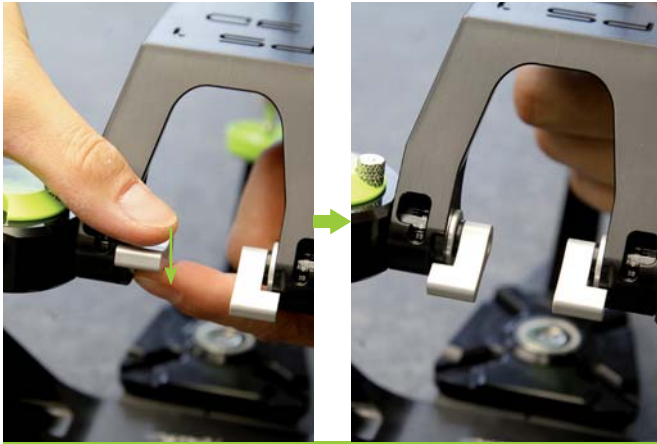


12

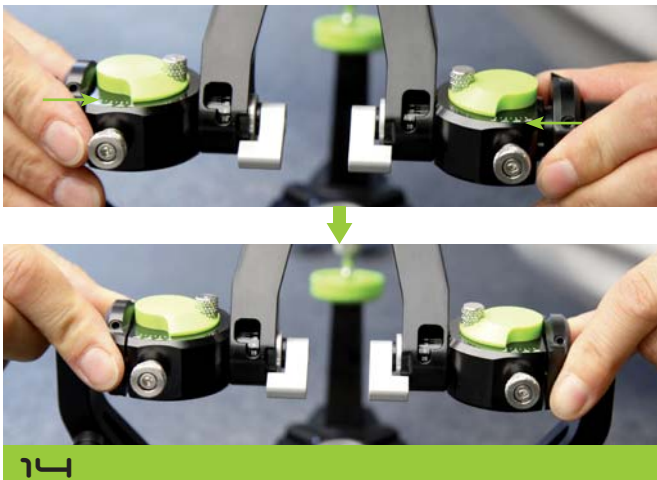
Make sure that the angle is at 0°.

Glueing of the base plate in the PS1 articulator

Version: 14/03/2023 – Page 5 of 10



In case the angle is not at 0°, it can be corrected by rotating the axis and then turning the levers.



Close the two clip-closings.



Tighten the two screws up to marking.



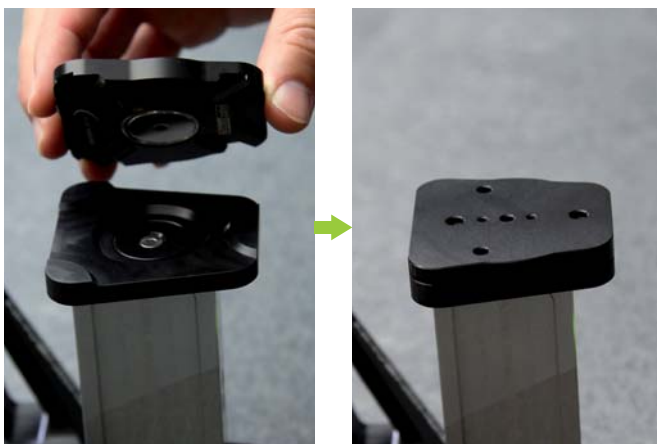
Glueing of the base plate in the PS1 articulator

Version: 14/03/2023 – Page 6 of 10



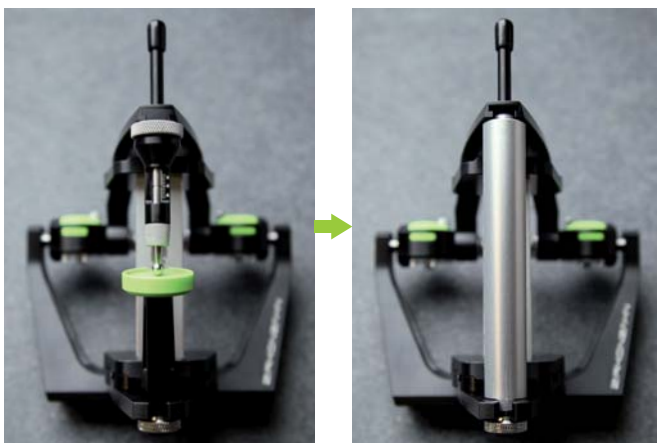
16

Mount the Adjusting Key PS1 on the Splitcast-plate of the articulator.



17

Mount the base plate at the top.

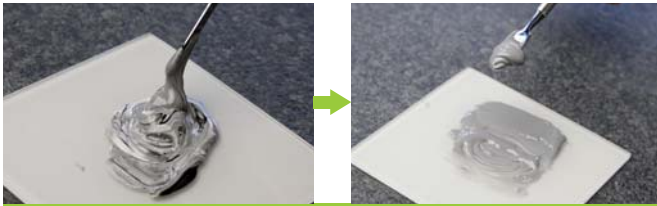


18

Replace the incisal pin and the anterior guide plate with the Zero Adjusting Pin PS1.

Glueing of the base plate in the PS1 articulator

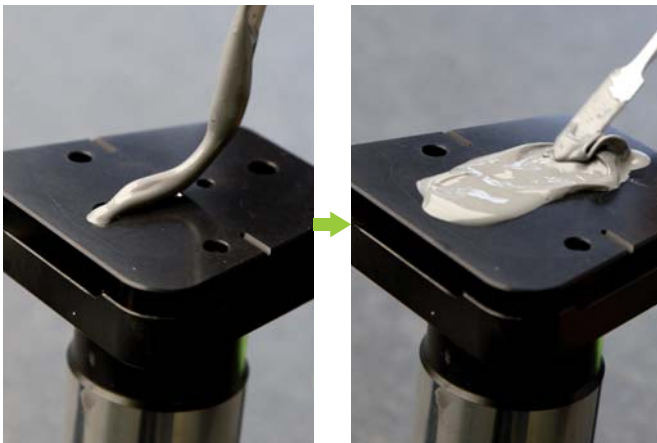
Version: 14/03/2023 – Page 7 of 10



19

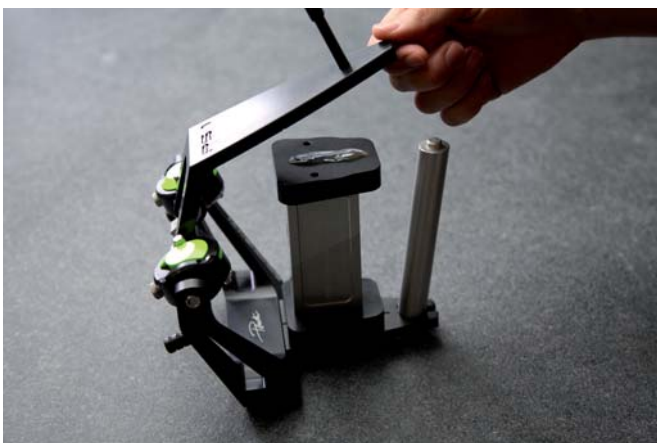
Prepare the adjusting glue according to the manufacturer's specifications.

ATTENTION: between the upper base plate and the upper part of the articulator you have to put enough glue in order to fill out the distance!



20

Put enough glue on the base plate and...



21

... close the articulator with caution.

Glueing of the base plate in the PS1 articulator

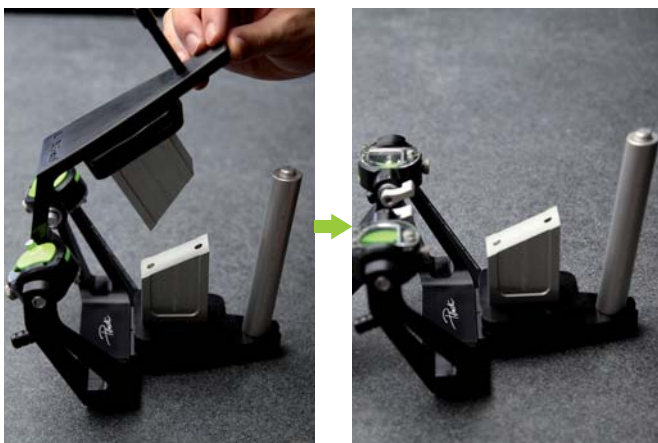
Version: 14/03/2023 – Page 8 of 10



To avoid distortion while the glue is hardening, place a light weight on the anterior part of the articulator.



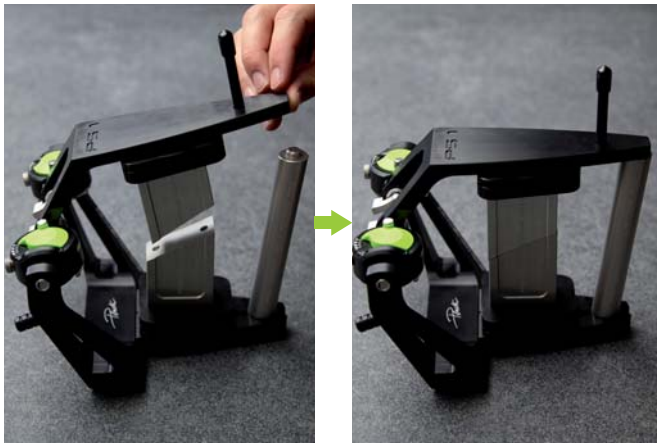
Loosen the two screws of the Adjusting Key PS1 ...



... and open the articulator

Glueing of the base plate in the PS1 articulator

Version: 14/03/2023 – Page 9 of 10



25

When the articulator is closed ...



26

... the two halves of the Adjusting Key PS1 should lie smoothly on each other. Should that not be the case, it is an indication for a distortion of the upper base plate. If this occurs, the upper base plate should be removed and glued again with the Adjusting Key PS1.