

Zirkonzahn[®]

Human Zirconium Technology

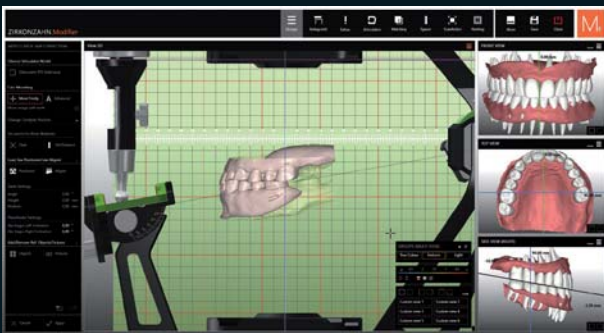


PRETTAU[®] 3 DISPERSIVE[®]

The Zirkonzahn Culture

MONOLITHIC SINGLE CROWNS MADE OF PRETTAU® 3 DISPERSIVE® ZIRCONIA

- Initial situation:* Elderly female patient with loss of tooth structure and reduced vertical dimension
- Patient request:* Long-term functional and aesthetic rehabilitation of the abraded teeth
- Realisation:*
- 3D digitisation of the patient with the Face Hunter 3D facial scanner
 - Digital articulation using the PlaneFinder® in the Zirkonzahn.Modifier software
 - Virtual tooth set-up and individualisation of tooth shapes with selection from Heroes Collection rooted tooth library
 - Design of mock-ups for the upper and lower jaw; milling from the Temp Premium Flexible resin blank and try-in in the patient's mouth to test phonetics, function and aesthetics
 - Simultaneous creation of a temporary restoration made of Prime resin, which the patient wore until the insertion of her final zirconia restorations, as well as of 26 individual crowns made of Try-In material for final occlusion testing and aesthetics assessment
 - Manufacturing of the final single crowns made from Prettau® 3 Dispersive® zirconia in A2 shade; sintering
 - Model creation to verify the restorations fit
 - Characterisation with ICE Stains 3D by Enrico Steger and subsequent minimal veneering
 - Cementation of the restorations in the patient's mouth and polishing
 - Design and manufacturing of a Therapon Transpa splint to protect the final restoration



100 % MONOLITHIC, MINIMAL AESTHETIC LAYERING

Dr. Julia Kozik – Bern, Switzerland

DT Alexander Lichtmannegger – Zirkonzahn Education Center Brunico, South Tyrol, Italy





NEW! PRETTAU® 3 DISPERSIVE®

- The material is already provided with colour, translucency and flexural strength gradients during the production process
- **Gradual-Triplex-Technology:** with natural colour gradient, a highly translucent incisal edge and an extremely high flexural strength at the tooth neck
- For reduced or monolithic single crowns, inlays, onlays, veneers and bar-supported multi-unit bridges, especially suitable for monolithic designs
- No ceramic chipping (thanks to monolithic design), no abrasion of the antagonist
- Can be characterised individually for each patient with Colour Liquids Prettau® Aquarell Intensive, ICE Ceramics and ICE Stains 3D by Enrico Steger



HUMAN ZIRCONIUM TECHNOLOGY

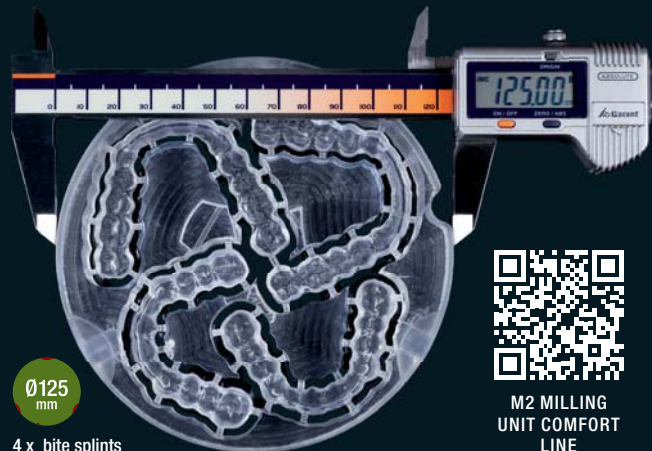
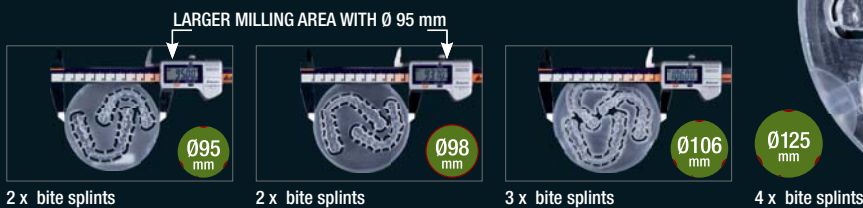
Zirkonzahn Canada – Tel +1 647 740 8070 – info@zirkonzahn.com – www.zirkonzahn.com

Zirkonzahn Worldwide – Tel +39 0474 066 680 – info@zirkonzahn.com – www.zirkonzahn.com

NEW! 1 ORBIT – 4 DIAMETERS

125, 106, 98 AND 95 mm

M2 MILLING UNIT COMFORT LINE WITH EXTRA-LARGE TELESKOPER ORBIT.
FULLY AUTOMATIC, FLEXIBLE, VIBRATION-FREE



WEAB2690CA*