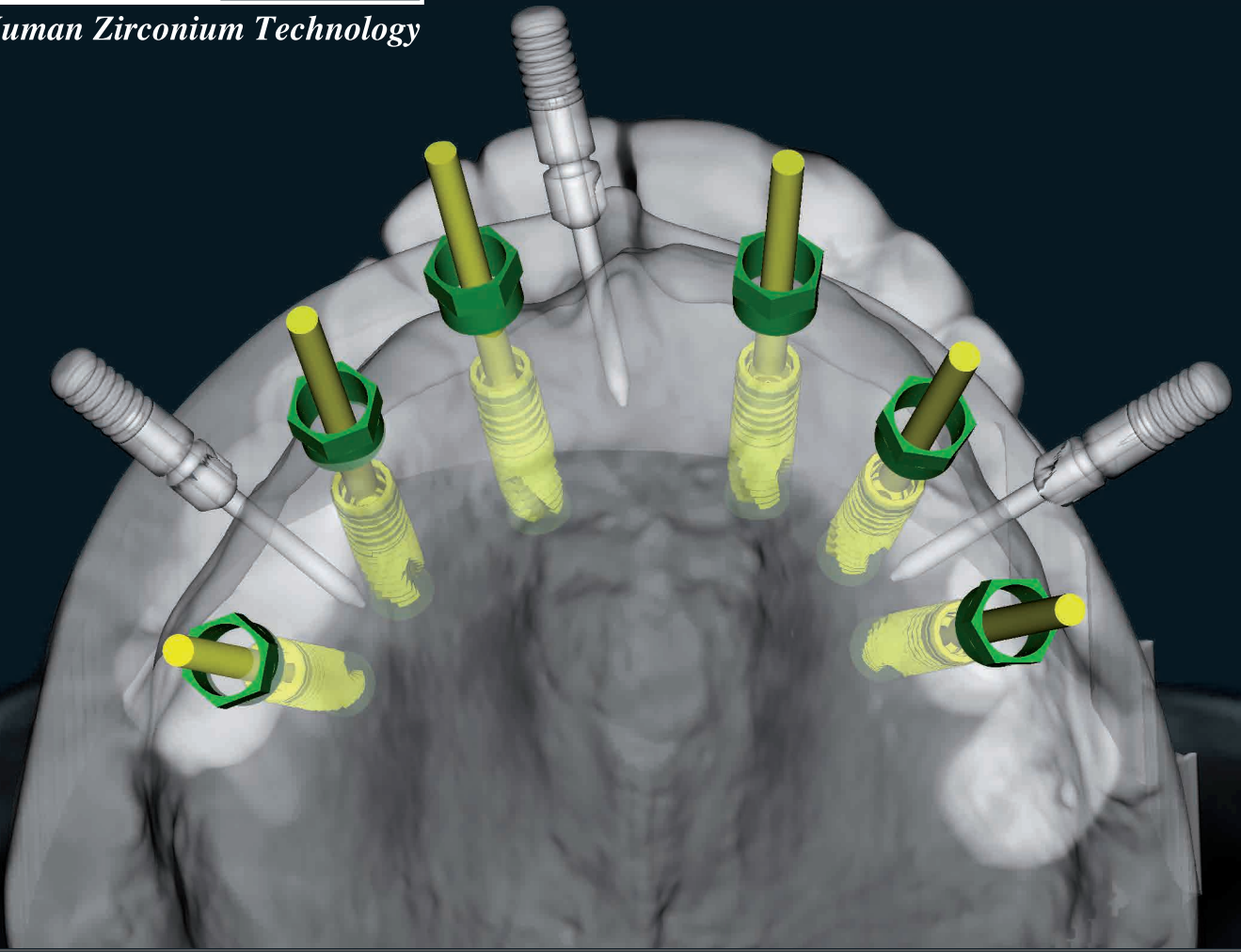


Zirkonzahn®

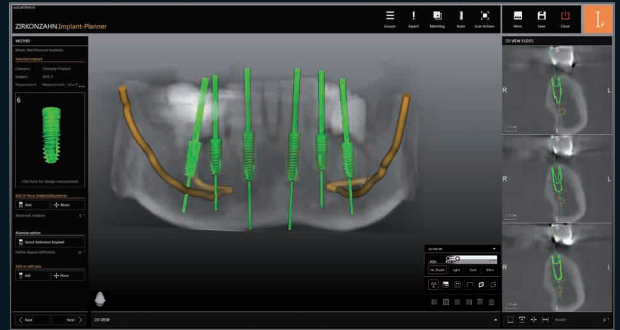
Human Zirconium Technology



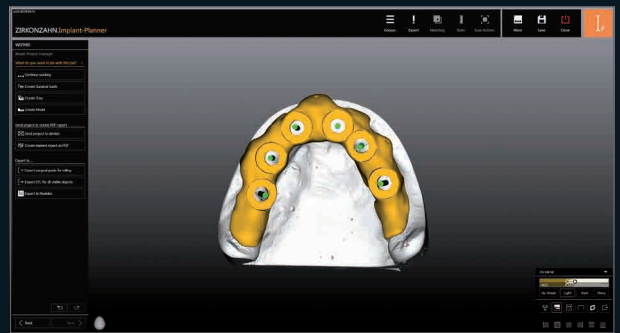
ZIRKONZAHN.IMPLANT-PLANNER

From the implant planning to the resin provisional

IMPLANT PLANNING AND THE SURGICAL GUIDE



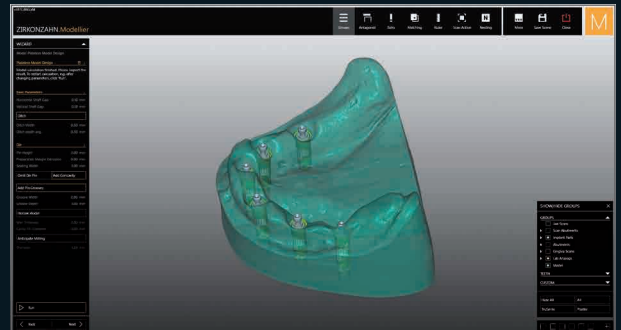
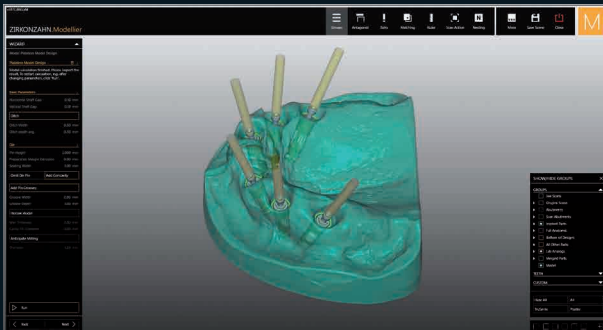
With Zirkonzahn.Implant-Planner, the design of the prosthetic restoration can be considered already during the implant planning phase. Implant planning is possible for all common implant systems – the software contains an extensive library of implant-prosthetic components and drilling sleeves, which are continually being expanded.



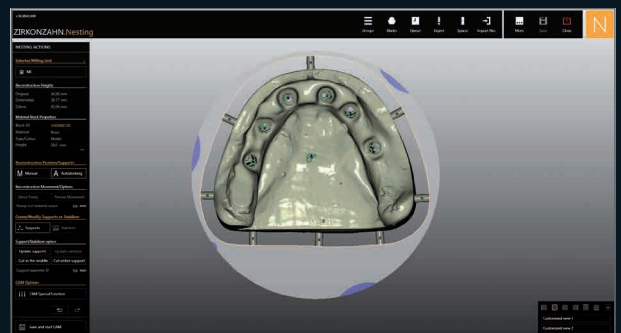
Based on the digitally merged patient data (e.g. DICOM data, intraoral scans, set-up), the dentist can determine the ideal implant positions according to functional and aesthetic aspects, taking bone density into account. Based on such data, the dental technician can produce surgical guides, individual impression trays, models, restorations for immediate loading and resin prototypes.



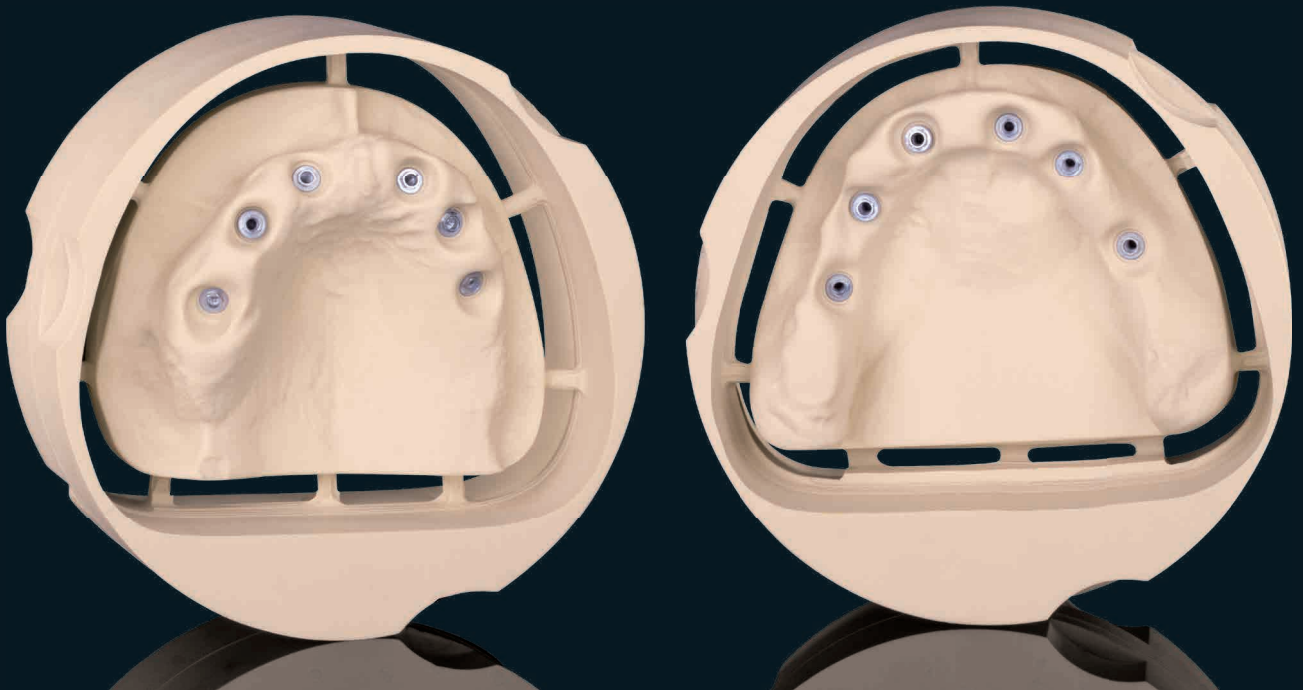
MILLING MODELS WITH THE CAD/CAM MODEL MAKER SOFTWARE MODULE



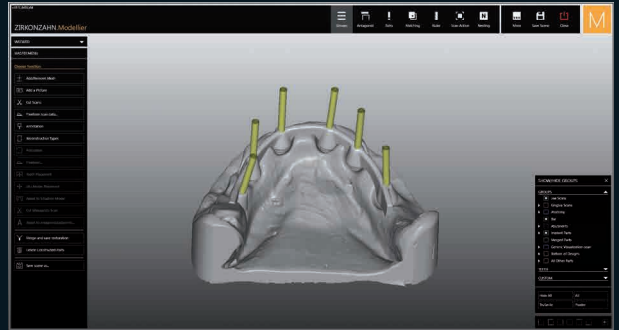
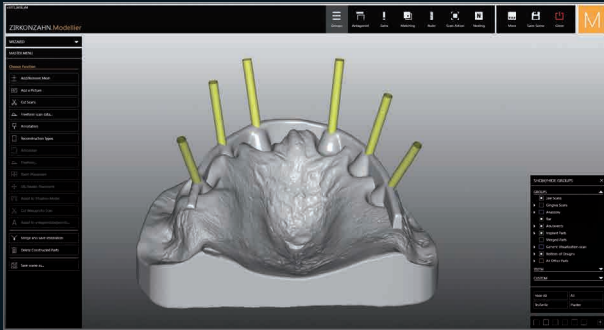
After the implants placement, the situation can be recorded either using an intraoral scanner and White Scanmarkers, or following conventional methods with individual impression trays, impression copings and ScanAnalogs. Then, the situation is transferred in the correct position into the Zirkonzahn.Modellier software or another design software.



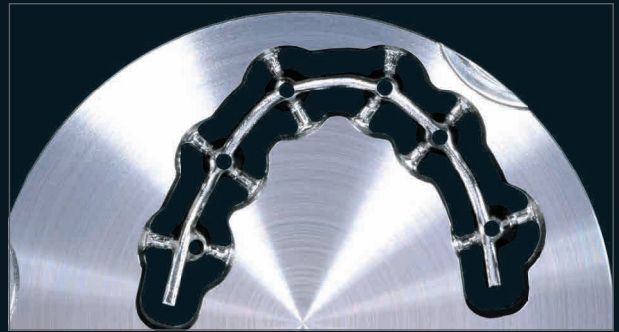
With the CAD/CAM Model Maker software module, the upper and lower master models are designed and then manufactured using a Zirkonzahn milling unit. The models are fitted with laboratory analogues and can then be used to check the final restorations, e.g. resin prototypes with titanium bars.



THE CREATION OF TITANIUM BARS



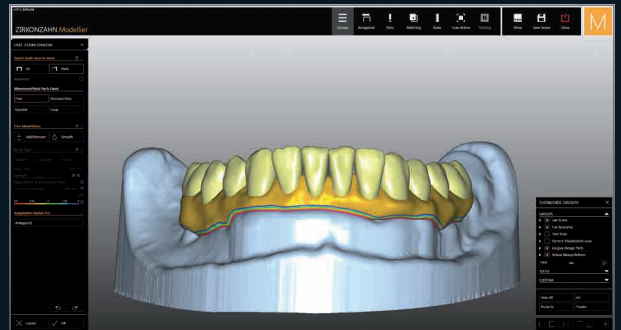
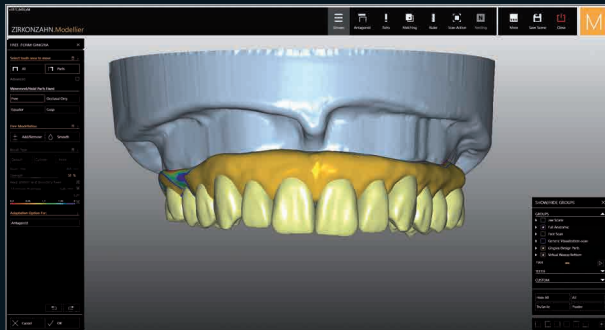
The digital master models together with the diagnostic wax-ups created in the Zirkonzahn.Implant-Planner software serve as a reference for the design of the titanium bars.



After their elaboration with a Zirkonzahn milling unit, the bars made of high-quality titanium 5 are refined with a surveyor and high-gloss polished. According to one's requirements, the titanium bars can be anodised in a golden shade using the Titanium Spectral-Colouring Anodizer, in order to avoid the grey value shining through the superstructures.



THE CREATION OF THE RESIN PROTOTYPES AS LONG-TERM PROVISIONALS



The resin prototypes are designed and milled according to the metal bars and to the virtual wax-ups adapted to them.



For this purpose, the flexible high-performance Multistratum® Flexible resin is used. This stable, biocompatible material is already provided with a natural colour transition, which endows the provisionals with highly aesthetic properties. The gingival areas are veneered with Gingiva-Composites (optional).



I
P

ZIRKONZAHN.IMPLANT-PLANNER – 3D IMPLANT PLANNING SYSTEM APPROVED AS MEDICAL DEVICE

- *Intuitive-to-use software with step-by-step guidance (Wizard).*
- *Compatible with all open DICOM-Data from CT-, CBCT-, DCM-devices.*
- *Determining the ideal implant position on the basis of bone density and patient individual data such as DICOM data, wax-up, intraoral and model scans as well as 3D facial scans.*
- *Conversion of DICOM data into STL data records for further processing with other CAD software (CAD/CAM STL-Converter software module required).*
- *Extensive implant libraries with varied implant-prosthetic components compatible with all common implant systems; library with a wide range of drilling sleeves. The libraries are being continually expanded.*
- *Exporting the implant planning for further processing in the Zirkonzahn.Modellier software or another CAD software for planning the prosthetic restoration and the models with laboratory analogues. Manufacturing with Zirkonzahn CAD/CAM milling units, with CAD/CAM systems of other manufacturers or with 3D printers.*
- *Creation of surgical guides, which can be either tooth-borne, bone-borne or mucosa-borne and that can be fixed with pins.*
- *Creation of custom impression trays (CAD/CAM Z-Tray software module required).*

HUMAN ZIRCONIUM TECHNOLOGY

Zirkonzahn Worldwide – Tel +39 0474 066 680 – info@zirkonzahn.com – www.zirkonzahn.com



WEAB3519EN=