

Zirkonzahn[®]

Human Zirconium Technology



PRETTAU[®] 2 DISPERSIVE[®]

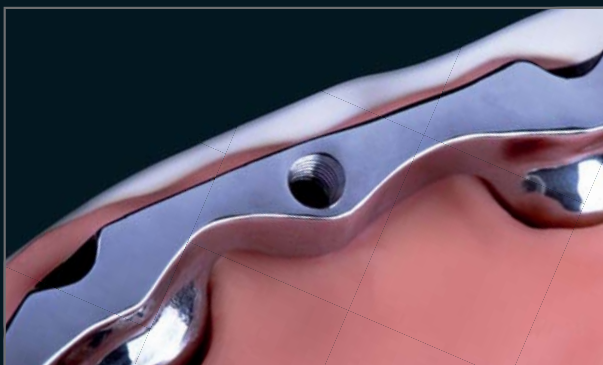
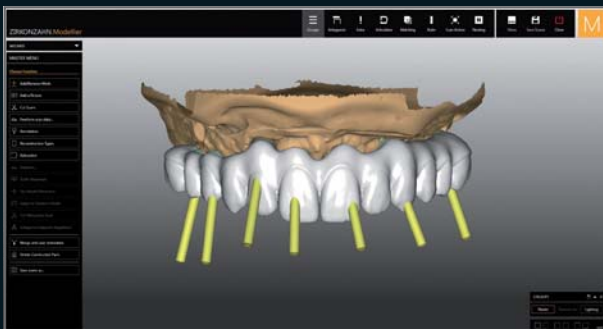
The Zirkonzahn Culture

ZIRCONIA STRUCTURE DESIGNED WITH THE DOUBLE SCREW METAL TECHNIQUE

Available data: 2D photos, master models, construction bite

Planned restoration: Monolithic, maxillary Prettau® 2 Dispersive® zirconia bridge on anodised titanium bar; designed with the Double Screw Metal technique

- Realisation:*
- Initial virtual tooth set-up with Zirkonzahn.Modellier using a tooth set from the Heroes Collection virtual tooth library
 - The virtual tooth set-up revealed a strong divergence of the implants towards the vestibular area. To strike a balance between function, stability and aesthetics in the final restoration, the Double Screw Metal technique was used
 - Digital design of the primary structure and implementation of four additional screw channels for screwing the secondary structure onto the bar, which are integrated in the bar during milling; digitisation of the bar
 - Creation of a resin prototype based on the first tooth set-up
 - After an extended wear period: digitisation of the prototype to create the final restoration; no functional and aesthetic adjustments necessary
 - Design and manufacture of the final structure in Prettau® 2 Dispersive® zirconia
 - Characterisation with ICE Stains 3D by Enrico Steger and veneering of the gingiva with Fresco Ceramics
 - The anodised bar is screwed to the implants and the secondary structure is screwed to the bar



100% AESTHETICS AND FUNCTIONALITY THANKS TO INTELLIGENT SOLUTIONS

Case made at Zirkonzahn Education Center Brunico, South Tyrol, in collaboration with Dr. Andrea Tedesco.



With the Double Screw Metal technique, unaesthetic vestibular channels can be avoided. It is thus possible to produce highly stable, bar-supported rehabilitations even in complex cases without compromising the full arch aesthetics.





NEW! PRETTAU® 2 DISPERSIVE®

- Pre-coloured zirconia with a natural colour gradient, optimal flexural strength and particularly high translucency
- No limitations! Ideal for monolithic full-arch bridges, but also for single crowns, inlays, onlays, veneers, bars and multi-unit bridges (reduced or monolithic)
- No ceramic chipping (thanks to monolithic design), no abrasion of the antagonist
- Can be characterised individually for each patient with Colour Liquids Prettau® Aquarell Intensive, ICE Ceramics, Fresco Ceramics and ICE Stains 3D by Enrico Steger



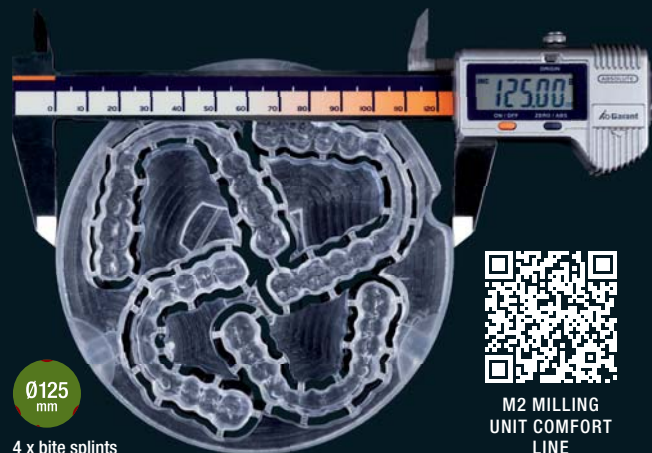
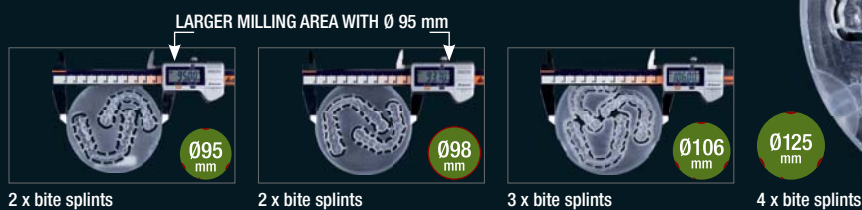
HUMAN ZIRCONIUM TECHNOLOGY

Zirkonzahn Worldwide – Tel +39 0474 066 680 – info@zirkonzahn.com – www.zirkonzahn.com

NEW! 1 ORBIT – 4 DIAMETERS

125, 106, 98 AND 95 mm

M2 MILLING UNIT COMFORT LINE WITH EXTRA-LARGE TELESKOPER ORBIT.
FULLY AUTOMATIC, FLEXIBLE, VIBRATION-FREE



M2 MILLING UNIT COMFORT LINE



WEAB2687EN=