

Zirkonzahn[®]

Human Zirconium Technology



PRETTAU[®] 2 DISPERSIVE[®]

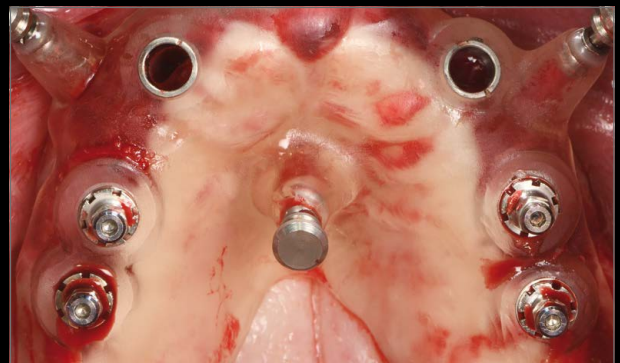
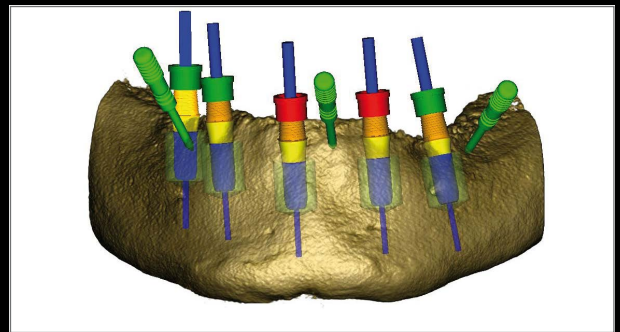
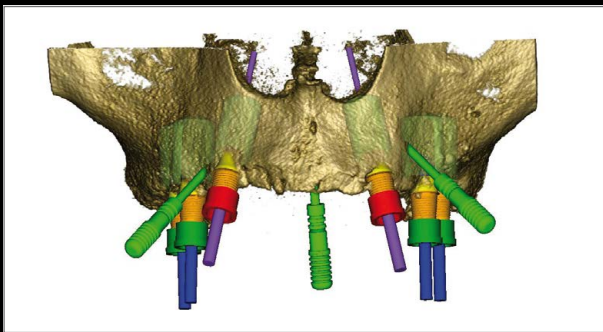
The Zirkonzahn Culture

IMPLANT-SUPPORTED FULL ARCHES MADE OF PRETTAU® 2 DISPERSIVE®

Planned restoration: The patient required a fixed implant-supported restoration for the upper and lower jaw

Workflow:

- Impression taking and bite registration with existing prostheses; 3D face scan with Face Hunter
- Tooth set-up and digital design of both full arches in the Zirkonzahn.Modifier software to correct occlusion and aesthetics
- Production and characterisation of the new prostheses in Temp Basic resin and insertion in the patient's mouth; both prostheses are used as basis for all further treatment steps
- Implant planning and production of surgical guides with Zirkonzahn.Implant-Planner
- Printing the implant models according to the implant planning, with integrated analogues
- Pins integration to stabilise the surgical guides and the immediate temporaries, ensuring a correct 3D orientation; printing of surgical guides and temporaries
- Temporaries characterisation
- Implant placement and impression taking after the healing period; temporaries insertion in the patient's mouth and scanning of the implant-supported temporaries on master models for designing the permanent zirconia restorations
- Milling of the full arches in Prettau® 2 Dispersive® zirconia with the M2 Dual Teleskoper
- Characterisation of teeth and gingival areas; insertion in the patient's mouth



PRECISE PLANNING WITH ZIRKONZAHN'S DIGITAL WORKFLOW

MDT Michael Bergler, Clinical Assistant Professor, Director, Center for Virtual Treatment Planning, Philadelphia, PA, USA

Dr. Wael Isleem, Philadelphia, PA, USA

Dr. Howard Fraiman, Clinical Associate Professor, Director, Periodontal Prosthesis Program, Philadelphia, PA, USA





NEW! PRETTAU® 2 DISPERSIVE®

- Pre-coloured zirconia with a natural colour gradient, optimal flexural strength and particularly high translucency
- No limitations! Ideal for monolithic full-arch bridges, but also for single crowns, inlays, onlays, veneers, bars and multi-unit bridges (reduced or monolithic)
- No ceramic chipping (thanks to monolithic design), no abrasion of the antagonist
- Can be characterised individually for each patient with Colour Liquid Prettau® Aquarell Intensive, ICE Ceramics, Fresco Ceramics, ICE Stains Prettau® and ICE Stains 3D by Enrico Steger



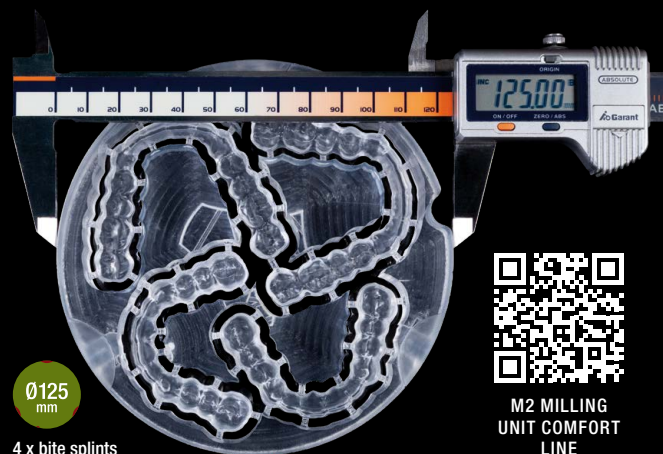
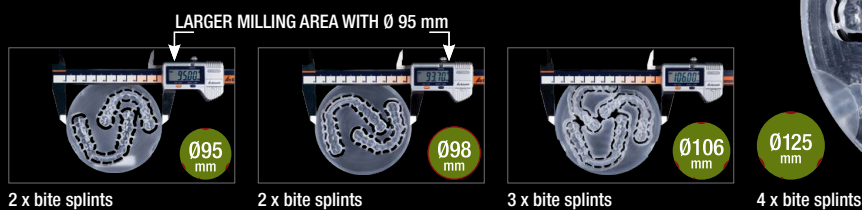
HUMAN ZIRCONIUM TECHNOLOGY

Zirkonzahn Worldwide – Tel +39 0474 066 680 – info@zirkonzahn.com – www.zirkonzahn.com

NEW! 1 ORBIT – 4 DIAMETERS

95, 98, 106 AND 125 mm

M2 MILLING UNIT COMFORT LINE WITH EXTRA-LARGE TELESKOPER ORBIT.
FULLY AUTOMATIC, FLEXIBLE, VIBRATION-FREE



M2 MILLING
UNIT COMFORT
LINE



WEAB2694EN=