

**Zirkonzahn<sup>®</sup>**

*Human Zirconium Technology*



**PRETTAU<sup>®</sup> ANTERIOR<sup>®</sup>**

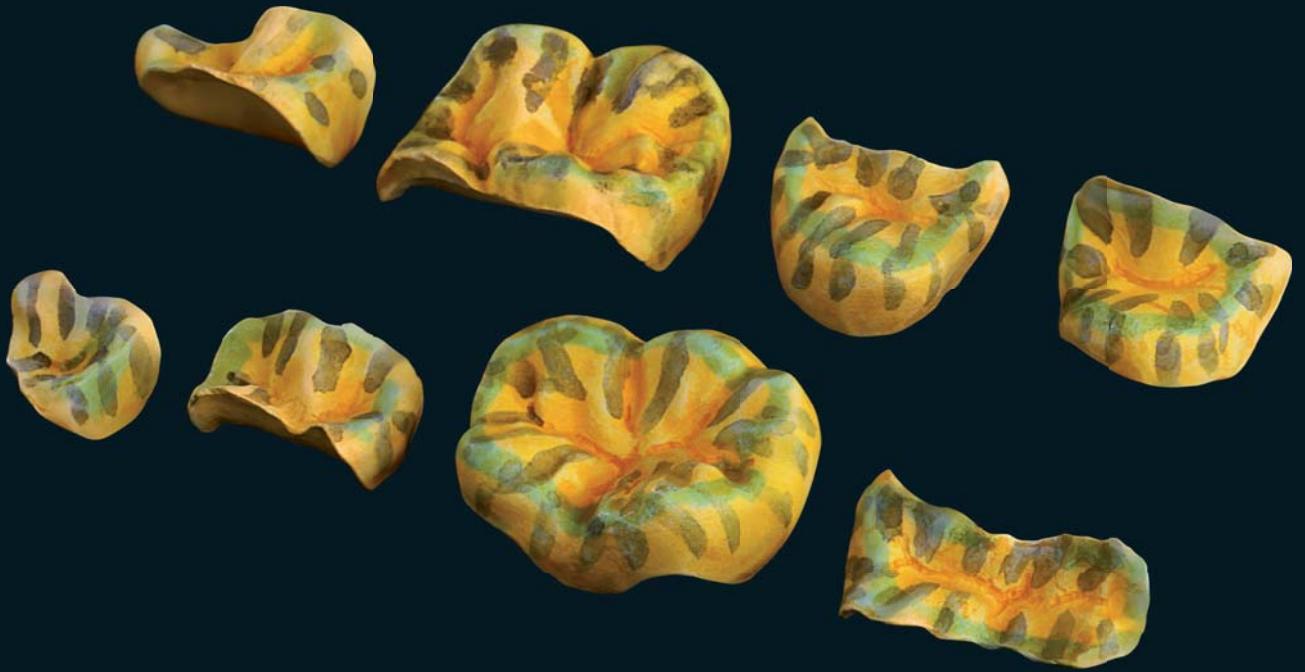


## PRETTAU® ANTERIOR®

Prettau® Anterior® is a *new and highly biocompatible zirconia material*. Due to its excellent aesthetic properties and higher transparency, it is ideally suited for use in the anterior tooth region. Moreover, it is also perfectly appropriate for use in the posterior tooth region.

- Higher transparency due to optimised microstructure of the zirconia
- Bending strength: 670 MPa (School of Dental Medicine, University of Pennsylvania)
- Indications: metal-free partial and single crowns, inlays, onlays, veneers, max. 3-unit bridges
- Fully anatomic or reduced structures for ceramic layering
- Shorter sintering time due to final sintering temperature of 1,500 °C
- For dry processing with common zirconia burs
- Customisable with Colour Liquid Prettau® Anterior® Aquarell, ICE Zirkon Keramik Ceramics, ICE Zirkon Malfarben Prettau® Stains and ICE Zirkon Malfarben 3D by Enrico Steger Stains





*Prettau® Anterior® inlays and onlays, coloured with Colour Liquid Prettau® Anterior® Aquarell*



*Prettau® Anterior® inlays and onlays, coloured with ICE Zirkon Malfarben 3D by Enrico Steger Stains*



*Prettau® Anterior® coloured with ICE Zirkon Malfarben 3D by Enrico Steger Stains*

## HUMAN ZIRCONIUM TECHNOLOGY

*ZIRKONZAHN Worldwide – Tel +39 0474 066 680 – info@zirkonzahn.com – www.zirkonzahn.com*



*Prettau® Anterior®*



*Prettau® Zirconia*



WEAA5476=