

# Zirkonzahn®

*Human Zirconium Technology*



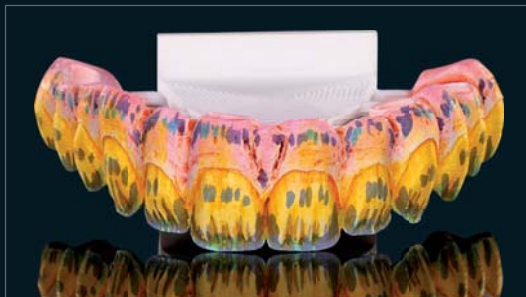
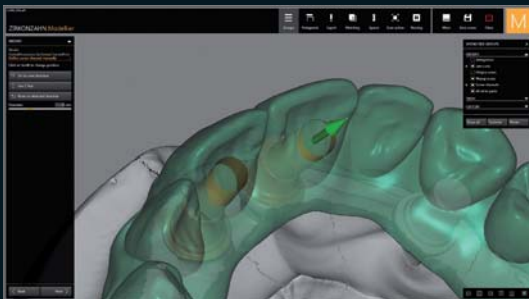
**100% PRETTAU® ZIRCONIA – MADE BY CAD/CAM**

*“Perfection through perseverance” Enrico Steger*

## PRETTAU® BRIDGE WITH A TITANIUM BAR ON 6 IMPLANTS IN THE MAXILLA

*The initial situation was an old occlusally screwed resin restoration on six implants in the maxilla. The treatment plan provided an esthetic and long-lasting restoration in Prettau® Zirconia which should be screwed onto six already existing implants in the patient's mouth. In order to plan the restoration, the following scans were carried out: master model, gingiva, implants (with titanium bases, for the digital and individual planning of the screw channels) and articulated models. After the digitalization of the patient's situation and the matching of the different scans, a virtual design was made with the help of a natural morphology from the Heroes Collection tooth library.*

*First, a resin prototype was milled and layered with Gingiva-Composites in order to examine the restoration in the mouth regarding esthetics, function and phonetic aspects. In our laboratory, these prototypes are produced according to our high standards and are delivered to the dentist, who can use them to give the patient a concrete idea of the final restoration during the consultation phase. After several months in which the patient uses the prototype as a provisional bridge, possible modifications are scanned and matched in the dental laboratory in order to transfer them onto the existing digital design and to use them as a wax-up for the final restoration. After consulting with the dentist, we learned that the cantilever in the region 15-16 should be reinforced with a titanium bar, in order to stabilize and fix the zirconia structures. After the CAD-planning and milling of the titanium bar, the bar and the prototype, that was slightly modified by the dentist, were scanned as a wax-up for the planning of the final restoration and matched with the remaining data. After milling the new design in Prettau® Zirconia, the next step was to reduce the anterior vestibular region and the gingiva manually and to color and sinter these parts subsequently. Finally, the structure was characterized with ICE Zirkon Ceramics and ICE Zirkon Stains 3D by Enrico Steger. The previously anodized, golden titanium bars and bases were bonded to the final Prettau® Bridge.*



# THE PRETTAU® BRIDGE

*Dr. Konstantina Dina Dedi DDS, MS, FACP – UCL Eastman Dental Institute London, United Kingdom  
Federico Presicci, DT, Zirkonzahn Education Center Brunico, Italy*



**Zirkonzahn®**



## HUMAN ZIRCONIUM TECHNOLOGY

*Zirkonzahn USA Inc. – Phone +1 800 989 8931 – Phone +1 678 441 9419 – [infousa@zirkonzahn.com](mailto:infousa@zirkonzahn.com)*

*Zirkonzahn Worldwide – Phone +39 0474 066 680 – [info@zirkonzahn.com](mailto:info@zirkonzahn.com) – [www.zirkonzahn.com](http://www.zirkonzahn.com)*



WEAA6761=

*All information is subject to change. Errors and omissions excepted. Version: 10/08/2017*