

**Zirkonzahn®**

*Human Zirconium Technology*



**PRETTAU® 2 DISPERSIVE® BLEACH**

*The Zirkonzahn Culture*

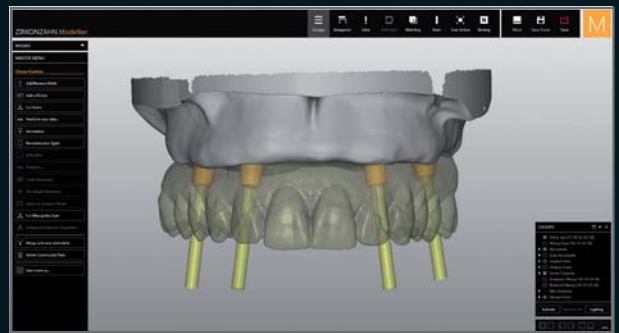
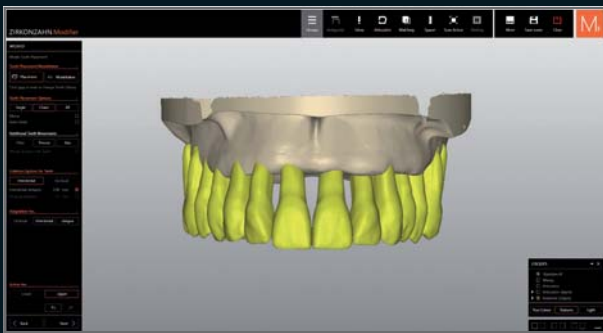
## MONOLITHIC FULL ARCHES MADE OF PRETTAU® 2 DISPERSIVE® BLEACH ZIRCONIA

### ON ANODIZED TITANIUM BASES AND VENEERED ONLY IN THE GINGIVAL AREA

*The monolithic restorations were planned based on the scans of two milled models with removable gingiva. An initial virtual tooth set-up was carried out in the Zirkonzahn.Modifier software, based on the individualization of the natural tooth anatomies selected from the Heroes Collection virtual tooth library. Thanks to the virtual markings characterizing the teeth of the Heroes Collection, the gingiva could be generated in the software automatically.*

*The structures were then nested in a Prettau® 2 Dispersive® zirconia blank, selecting the Bleach OMI shade, and milled with the M2 Dual Double Teleskoper. This zirconia is characterized by high flexural strength and translucency and is already provided with a natural color shading. However, for a more patient-oriented result, the Colour Liquid Prettau® Aquarell intensive colors were applied to accentuate the individual shade and, after sintering, the gingival area was veneered with ceramics.*

*Finally, before bonding, the titanium bases were anodized in gold color with the Titanium spectral-colouring Anodizer, in order to conceal them under the zirconia superstructure and to reduce the gray value of the final restoration.*



# 100 % MONOLITHIC DESIGN, VENEERED ONLY IN THE GINGIVAL AREA

*DT Janka Gregorics – Zirkonzahn Education Center Brunico, South Tyrol, Italy*





## PRETTAU® 2 DISPERSIVE®

- Pre-colored zirconia with a natural color gradient, optimal flexural strength and particularly high translucency
- No limitations! Ideal for monolithic full-arch bridges, but also for single crowns, inlays, onlays, veneers, bars and multi-unit bridges (reduced or monolithic)
- No ceramic chipping (thanks to monolithic design), no abrasion of the antagonist
- Can be characterized individually for each patient with Colour Liquid Prettau® Aquarell Intensive, ICE Ceramics and ICE Stains 3D by Enrico Steger
- Also available in three Bleach shades



Prettau® 2 Dispersive® Bleach 0M1

Bleach shades



## HUMAN ZIRCONIUM TECHNOLOGY

Zirkonzahn USA Inc. – Phone +1 800 989 8931 – Fax +1 800 699 1813 – [infousa@zirkonzahn.com](mailto:infousa@zirkonzahn.com)

Zirkonzahn Worldwide – Phone +39 0474 066 680 – [info@zirkonzahn.com](mailto:info@zirkonzahn.com) – [www.zirkonzahn.com](http://www.zirkonzahn.com)

## NEW! TELESKOPER ORBIT (Ø 125 mm)

1 ORBIT FOR 4 BLANK SIZES – WITH THE M2 DUAL DOUBLE TELESKOPER MILLING UNIT



WATCH THE  
VIDEO!



WEAB2684US=