

Zirkonzahn[®]

Human Zirconium Technology



PRETTAU[®] ANTERIOR[®]

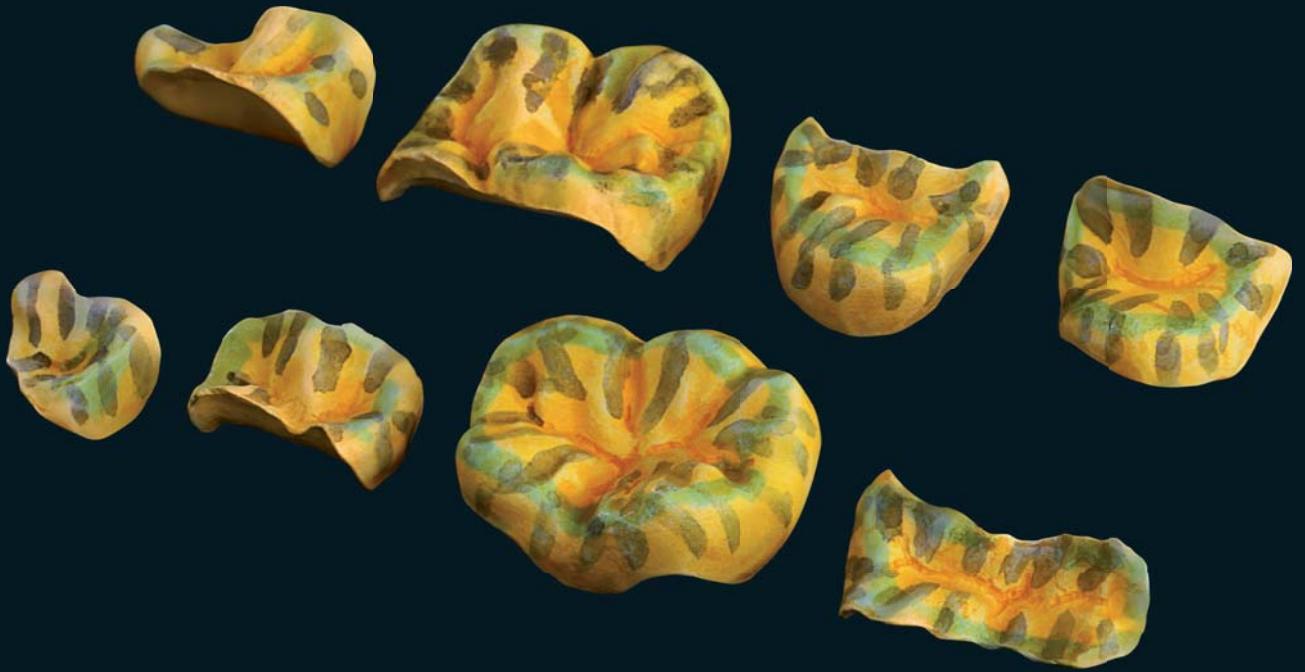


PRETTAU® ANTERIOR®

Prettau® Anterior® is a *new and highly biocompatible zirconia material*. Due to its excellent esthetical properties and higher transparency, it is ideally suited for use in the anterior tooth region. Moreover, it is also perfectly appropriate for use in the posterior tooth region.

- Higher transparency due to optimized microstructure of the zirconia
- Bending strength: 670 MPa (School of Dental Medicine, University of Pennsylvania)
- Indications: metal-free partial and single crowns, inlays, onlays, veneers, max. 3-unit bridges
- Fully anatomic or reduced structures for ceramic layering
- Shorter sintering time due to final sintering temperature of 1,500 °C (2,732 °F)
- For dry processing with common zirconia burs
- Customizable with Colour Liquid Prettau® Anterior® Aquarell, ICE Zirkon Keramik Ceramics, ICE Zirkon Malfarben Prettau® Stains and ICE Zirkon Malfarben 3D by Enrico Steger Stains





Prettau® Anterior® inlays and onlays, colored with Colour Liquid Prettau® Anterior® Aquarell



Prettau® Anterior® inlays and onlays, colored with ICE Zirkon Malfarben 3D by Enrico Steger Stains

Zirkonzahn®



Prettau® Anterior® colored with ICE Zirkon Malfarben 3D by Enrico Steger Stains

HUMAN ZIRCONIUM TECHNOLOGY

ZIRKONZAHN Worldwide – Phone +39 0474 066 680 – info@zirkonzahn.com – www.zirkonzahn.com

ZIRKONZAHN USA Inc. – Phone +1 800 989 8931 – Phone +1 678 441 9419 – infousa@zirkonzahn.com



Prettau® Anterior®



Prettau® Zirconia