

Zirkonzahn®

ZIRKONZAHN
**SHADE
GUIDE**



ZIRCONIA FROM THE DOLOMITES

MONOLITHIC ZIRCONIA SHADE GUIDES
ZIRKONZAHN SHADE GUIDES

Zirkonzahn®



VIDEO:
THE SOUTH TYROLEAN
DOLOMITES



ZIRCONIA FROM THE DOLOMITES

PRETTAU® – THE MOST EXPENSIVE. FOR THE CLIENTS YOU VALUE.

MONOLITHIC ZIRCONIA SHADE GUIDES

IN THE SHAPE OF A PREMOLAR AS WELL AS LOWER AND UPPER INCISOR
(ALSO WITH MINIMAL CUTBACK FOR INDIVIDUAL CHARACTERISATION)

With the new Zirkonzahn Shade Guides it is possible to determine precise patient tooth shade and select optimal Prettau® Dispersive® material through monolithic zirconia sample teeth. The colour spectrum is inspired by the VITA classic range, comprised of 16 dentine shades (A1–D4) and 3 bleach colours. The sample teeth are monolithic and glazed with 3D Base Glaze. Colour theory shows that shape and surface structure considerably influence the colour effect. Striving for perfection, we build our shade guides in all respective Prettau® Dispersive® zirconia materials, in the shape of a premolar as well as lower and upper incisor.



(1)

(2)

(3)

(4)

ZIRCONIA SHADE GUIDES
IN THE SHAPE OF:

- (1) *upper incisor*
- (2) *upper incisor with minimal cutback
for individual characterisation*
- (3) *lower incisor*
- (4) *premolar*

UPPER INCISOR



UPPER INCISOR WITH MINIMAL CUTBACK FOR INDIVIDUAL CHARACTERISATION



LOWER INCISOR



PREMOLAR



INDIVIDUAL SHADE GUIDES

WITH MINIMALLY REDUCED SAMPLE TEETH



The shade guides for the upper jaw are also available with sintered sample teeth with minimal cutback, which can be further characterised through the application of different incisal materials.



SAMPLE TEETH WITH MINIMAL CUTBACK

IN THE SHAPE OF UPPER INCISOR, FOR TRULY UNIQUE SHADE GUIDES



Sintered



Characterised



Layered with ceramics



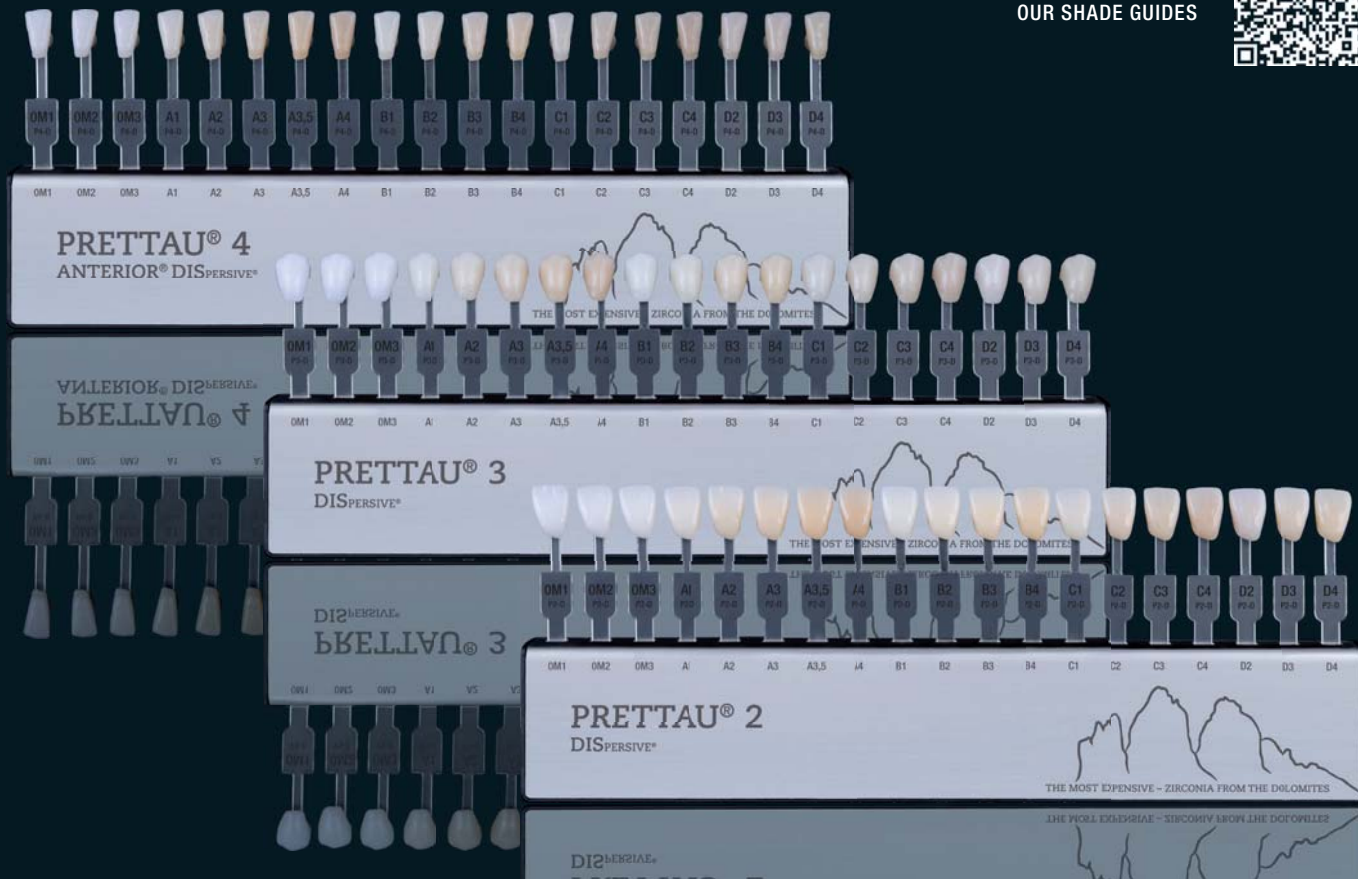
Final result

MATERIAL DIVERSITY

SHADE GUIDES AVAILABLE FOR THE DIFFERENT PRETTAU® DISPERSIVE® ZIRCONIA MATERIALS

Zirkonzahn Shade Guides are available for the different types of Prettau® Dispersive® zirconia (Prettau® 2 Dispersive®, Prettau® 3 Dispersive® and Prettau® 4 Anterior® Dispersive®). They are made of the same material and colour as the final restoration: in this way, it is guaranteed that the final prosthesis will reflect 100% the patient's natural tooth colour.

MORE INFORMATION ABOUT
OUR SHADE GUIDES



SHADE GUIDE PRETTAU® LINE

FOR THE DENTAL PRACTICE

For the dental practice, we recommend our specially developed Zirkonzahn Shade Guide Prettau® Line, with monolithic sample teeth in the shape of a premolar as well as lower and upper incisor (also with minimal cutback for individual characterisation).



0M1 0M2 0M3 A1 A2 A3 A3,5 A4 B1 B2 B3 B4 C1 C2 C3 C4 D2 D3 D4

PRETTAU®
LINE

THE MOST EXPENSIVE - ZIRCONIA FROM THE DOLOMITES

LINE
PRETTAU®

THE MOST EXPENSIVE - ZIRCONIA FROM THE DOLOMITES

0M1 0M2 0M3 A1 A2 A3 A3,5 A4 B1 B2 B3 B4 C1 C2 C3 C4 D2 D3 D4

SPECIAL FEATURES

OVERVIEW OF CHARACTERISTICS

- *Shade guides with monolithic zirconia sample teeth in the shape of a premolar as well as upper and lower incisor, manufactured with Prettau® 2 Dispersive®, Prettau® 3 Dispersive® or Prettau® 4 Anterior® Dispersive® zirconia, for a final restoration with a colour as close as possible to the patient's natural teeth.*
- *Zirkonzahn Individual Shade Guides: shade guides that can be individually characterised, composed of sintered, minimally reduced sample teeth (minimal cutback)*
- *Very accurate reproduction of the colour and translucency values of the different Dispersive® zirconia types (One-to-One Function) for all monolithic zirconia restorations (veneers, crowns, bridges)*
- *Colour spectrum: 19 colour shades (A1–D4 as well as 3 Bleach shades, inspired by the VITA colour range)*
- *Transparent, metal-free sample bars made of temperature-resistant plastic to avoid interference caused by translucent metal (no shining through under the zirconia material, as it would be the case with metal sample bars)*
- *Sample teeth can be placed in any position without shifting thanks to a special 360° locking mechanism*
- *Simply practical: stainless steel holder with all important processing information*



THE SOUTH TYROLEAN DOLOMITES

The white, rugged and ancient Dolomites, unique of their kind, rise up from the enormous primordial sea of Tethys 250 million years ago. Lifted with strength by the hard coral reefs of the African continent, they stand proudly against the infinite sky, challenging all weather conditions.

As unique as this natural monolith, is zirconia the dental material of choice.

VIDEO:
THE SOUTH TYROLEAN
DOLOMITES



ONE-TO-ONE FUNCTION

Only if the material of the shade guide and the material of the zirconia structure are identical is it possible to achieve a restoration colour as close as possible to the patient's natural teeth



ZIRKONZAHN SHADE GUIDE TOOTH 11



ZIRKONZAHN **INDIVIDUAL** SHADE GUIDE TOOTH 11



ZIRKONZAHN SHADE GUIDE TOOTH 11



ZIRKONZAHN **INDIVIDUAL** SHADE GUIDE TOOTH 11



ZIRKONZAHN SHADE GUIDE TOOTH 31



ZIRKONZAHN SHADE GUIDE TOOTH 31



ZIRKONZAHN SHADE GUIDE TOOTH 25



ZIRKONZAHN SHADE GUIDE TOOTH 25

HOW TO AVOID POSSIBLE DISTURBING INFLUENCES

WHEN USING ZIRKONZAHN SHADE GUIDES

- *Colour determination should be carried out under natural daylight conditions or in a room illuminated with standardised daylight lamps; avoid direct, bright light (approx. 2000 lux, a well-lit dental chair already has approx. 8000 lux).*
- *Carry out colour determination quickly in no longer than 5–7 s. The human eye tires quickly when looking at something with concentration. This also affects the colour perception.*
- *Perform colour matching in a neutral colour environment, on a patient without make-up who is wearing neutral-coloured clothes. Intense colours influence the perception of colours that are observed immediately afterwards (simultaneous contrast).*
- *Participation in a colour matching course – When determining the patient's tooth colour, the exclusion of sources of interference and the individual experience level are of considerable importance. Participation in a special training course can be very helpful.*



TOOTH SHADE DETERMINATION

STEP BY STEP EXPLANATION

WATCH THE VIDEO



- *Clean natural teeth well before determining the tooth colour, if necessary carry out a dental cleaning. The teeth surfaces do not have to be dried out, otherwise the teeth will appear too white.*
- *Carry out colour determination with relaxed lip position, ideally under daylight conditions (slightly cloudy sky) or under standardised daylight illumination.*
- *Hold the corresponding shade guide at a distance but still as close as possible next to or under the corresponding natural patient tooth (tooth neck to tooth neck or incisal edge to incisal edge).*
- *Disinfect the shade guides after use, allow to dry and store them in the supplied packaging, protected from direct sunlight.*
- *Check the fabricated monolithic zirconia structures ideally in industry standard daylight D65 with a correlated colour temperature of 6500 K.*



TOO DARK CAMERA EXPOSURE



CORRECT CAMERA EXPOSURE

MIRROR OF TIME AND LIFESTYLE

The teeth are a mirror of a person's life and individual lifestyle. They are different from person to person and disposition, lived years, nutrition and habits of each human being shape a unique appearance of wear patterns, degrees of translucency and colouring. The colour of a tooth is formed by the combination of dentine and enamel. In youth and when the person is in healthy growth, the dentine has a uniform colour. With increasing age, discolouration occurs, which usually manifests itself as darker areas in the dentine area. The overlying enamel, which is firmly bonded to the dentine, is characterised by varying degrees of cloudiness depending on the respective area – from whitish cloudy to almost transparent. Overall, the tooth tends to have a single shade, with a higher translucency level towards the incisal edge.

WHAT PATIENTS LIKE

Human teeth have different degrees of opacity: from quite transparent to very opaque. Cloudy, i.e. opaque, looks youthful and healthy. Especially in the case of larger restorations, this characteristic tends to be chosen by the patient. When adapting single crowns, attention is paid to the degree of cloudiness, if the dentition is intact. With the different Prettau® Dispersive® zirconia types, three degrees of translucency are available.

If the initial state of the teeth is relatively poor, there is a tendency to carry out a reset. The first step is to select the right colour foundation, which in the end leads to the optimal colour, and then the colour variant the patient likes best is chosen, namely the cloudiest and the brightest.



COLOUR SELECTION AND INDIVIDUALISED COLOUR DESIGN WITHOUT CHIPPING

Especially the incisal areas of monolithic zirconia restorations can be further individualised as desired. This can be achieved by applying a coloured glaze or by a minimal incisal reduction (minimal cutback) and subsequent light ceramic veneering. Monolithic restorations fabricated in this way completely prevent ceramic chipping (no chipping of small ceramic particles), because the ceramic applied in the incisal area according to individual interpretation and preference only fulfils aesthetic purposes.

THE TOOTH COLOUR – A COMPLEX MATTER

The reproduction of the natural tooth colour is a very complex process. Factors such as tooth structure, surface structure, translucency and fluorescence properties, brightness, light reflection and material selection play an essential role and interweave with objective and subjective factors of colour perception. To achieve the best possible result, it is therefore important to control as many factors as possible. An exact determination of the natural basic tooth colour is fundamental for the artificial reproduction. In the specialist literature it is therefore recommended to always use the shade guide of the material that will later be used for the restoration.*

(2011: Strub, Jörg R. / Kern, Matthias / Türp, Jens Christoph / Witkowski, Siegbert / Heydecke, Guido / Wolfart, Stefan; Curriculum Prosthetics, Volume II, 4th, revised and expanded edition, Quintessenz Verlags-GmbH.)*



A SOURCE OF INSPIRATION FOR OUR ZIRCONIA

Famous today as UNESCO World Natural Heritage, the Dolomites, located in South Tyrol, are a unique mountain range, an exceptional phenomenon in the Alps. Respected as a magical place in the Stone Age, they are still shrouded in their mystical charm.

Their white colour lives on through the centuries, shining brightly in the moonlight and reverberating the glowing colours of the setting sun. This is the myth. These are the Dolomites – a source of strength and timeless inspiration.

To imbue it with unique properties. To improve it. To make it resistant beyond our lifetime. To infuse luminosity and all its extraordinary attributes, gives us, as producers of this noble material, inspired by our South Tyrolean homeland and scientific spirit, the unbelievably immense feeling of doing the right thing.

VIDEO:
THE SOUTH TYROLEAN
DOLOMITES



*PRETTAU® 3 DISPERSIVE®

Upper and lower monolithic restorations

**In Canada bridge indications are limited to 3 units for Prettau® 3 Dispersive®*



NEW! GRADUAL-TRIPLEX-TECHNOLOGY

PRETTAU® 3 DISPERSIVE® ZIRCONIA WITH NATURAL COLOUR AND TRANSLUCENCY GRADIENTS

- *The zirconia is already imbued with translucency and colour gradients during the production process:*
 1. *Incisally increasing translucency; highly translucent incisal edge*
 2. *Natural colour gradient from dentine to enamel*
- *No limitations! Indicated for single crowns, inlays, onlays, veneers, bars and multi-unit bridges (reduced or fully anatomical), especially suited for monolithic design*
- *No ceramic chipping (thanks to monolithic design); fast sintering of single crowns possible*
- *Can be characterised individually for each patient with Colour Liquid Prettau® Aquarell intensive colours, ICE Ceramics, Fresco Gingiva, Fresco Enamel and ICE Stains 3D by Enrico Steger*

MORE
INFORMATION



Translucency gradient



Colour gradient

PRETTAU® DISPERSIVE® ZIRCONIA


WITH HIGH TRANSLUCENCY AND NATURAL COLOUR GRADIENT

Prettau® Dispersive® zirconia materials are provided with a gentle and natural colour shading already during the manufacturing process thanks to a special technique that does not blend colours into layers but disperses them evenly. After sintering, a merging, natural colour gradient is created, which can be characterised manually if desired.




OVERVIEW OF ALL
PRETTAU® ZIRCONIA
MATERIALS

GRADUAL-TRIPLEX-TECHNOLOGY

*PRETTAU® 2
DISPERSIVE®

Translucency ★ ★ ☆ ☆
Optional: characterisation with Colour Liquid (intensive)
With natural colour gradient
Sintering temperature 1600 °C
Monolithic design in the anterior and posterior areas possible

*PRETTAU® 3
DISPERSIVE®

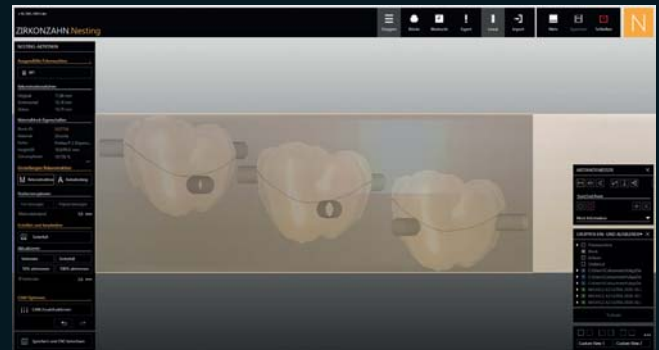
Translucency ★ ★ ★ ☆
Optional: characterisation with Colour Liquid (intensive)
Gradual-Triplex-Technology: with colour and translucency gradients
Sintering temperature 1500 °C
Monolithic design in the anterior and posterior areas possible

*PRETTAU® 4 ANTERIOR®
DISPERSIVE®

Translucency ★ ★ ★ ★
Optional: characterisation with Colour Liquid (intensive)
With natural colour gradient
Sintering temperature 1500 °C
Monolithic design in the anterior and posterior areas possible

**In Canada bridge indications are limited to 6 units for standard Prettau®/Prettau® 2 materials and to 3 units for Prettau® 3/Prettau® 4 Anterior® materials.*

INDIVIDUAL COLOUR INTENSITY

COLOUR INTENSITY CAN BE SELECTED INDIVIDUALLY BY MOVING THE POSITION OF THE RESTORATION IN THE BLANK





Zirkonzahn®

ZIRKONZAHN
GUIDE
HÄNDLER

THE MOST EXPENSIVE



OM1
OM2
OM3

PRETTAU®
LINE

PROF. EM. DR. CARLO P. MARINELLO

A1

A2

A3

A3,5

A4

B1

B2

B3

B4

B5

OM1

OM2

OM3

A1

A2

A3

A3,5

A4

B1

B2

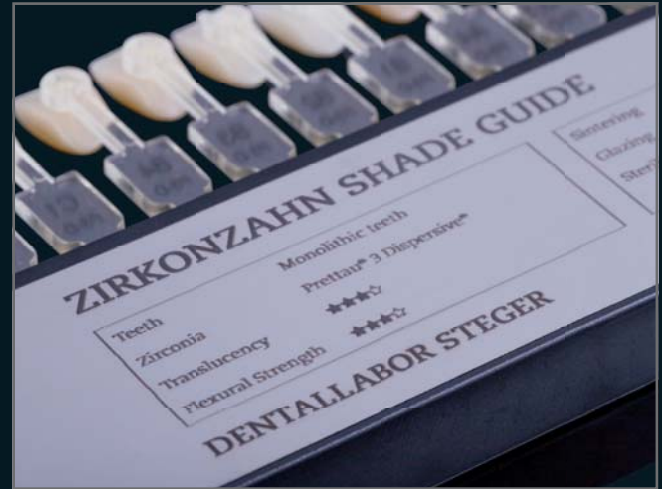
B3

B4

B5



PERSONALISED SHADE GUIDES



On request, the front side of the shade guide can be personalised with the name of the dental practice and the rear side with the name of the dental laboratory (at extra charge).



Zirconia shade guide for the upper jaw
Zirkonzahn Shade Guide Tooth 11

Prettau® Line
Item number: SGAA0401



Zirconia shade guide for the upper jaw
with minimal cutback
Zirkonzahn Individual Shade Guide Tooth 11

Prettau® Line
Item number: SGAA0411



Zirconia shade guide for the lower jaw
Zirkonzahn Shade Guide Tooth 31

Prettau® Line
Item number: SGAA0402



Zirconia shade guide for the posteriors
Zirkonzahn Shade Guide Tooth 25

Prettau® Line
Item number: SGAA0403



Prettau® 2 Dispersive®
Item number: SGAA0101



Prettau® 3 Dispersive®
Item number: SGAA0201



Prettau® 4 Anterior® Dispersive®
Item number: SGAA0301

Prettau® 2 Dispersive®
Item number: SGAA0111

Prettau® 3 Dispersive®
Item number: SGAA0211

Prettau® 4 Anterior® Dispersive®
Item number: SGAA0311

Prettau® 2 Dispersive®
Item number: SGAA0102

Prettau® 3 Dispersive®
Item number: SGAA0202

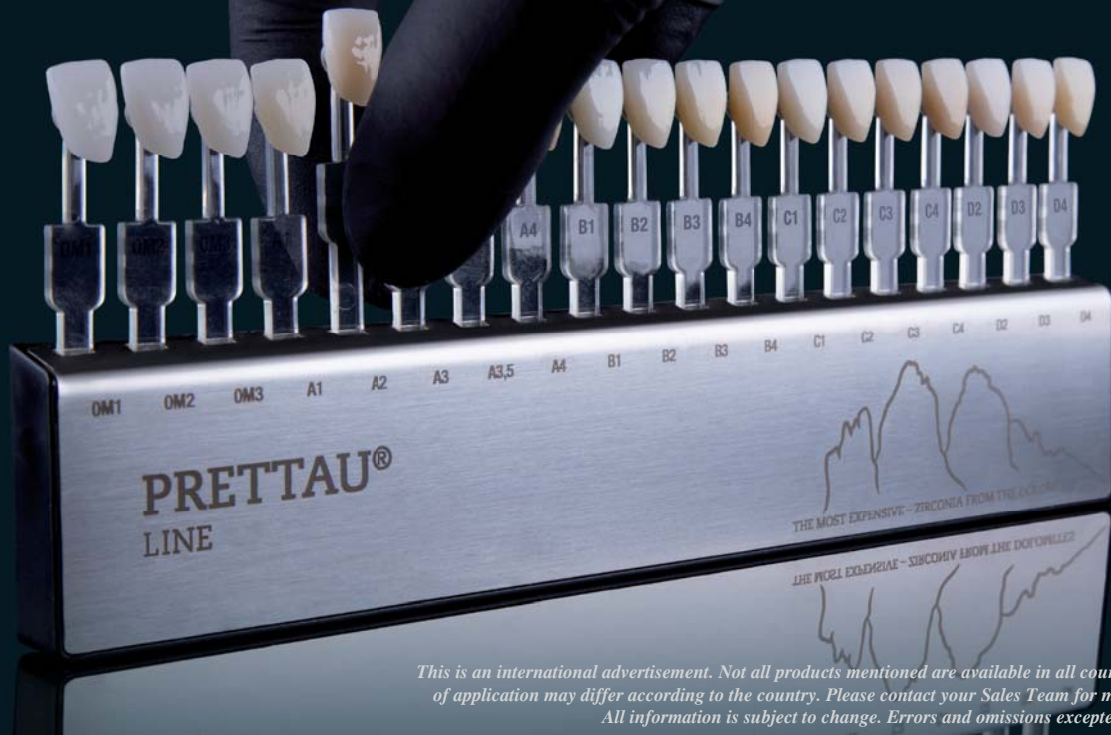
Prettau® 4 Anterior® Dispersive®
Item number: SGAA0302

Prettau® 2 Dispersive®
Item number: SGAA0103

Prettau® 3 Dispersive®
Item number: SGAA0203

Prettau® 4 Anterior® Dispersive®
Item number: SGAA0303

Zirkonzahn®



This is an international advertisement. Not all products mentioned are available in all countries. The product's area of application may differ according to the country. Please contact your Sales Team for more detailed information. All information is subject to change. Errors and omissions excepted. Version: May 23, 2023



WEAB8291CA=

Zirkonzahn Worldwide – Tel +39 0474 066 680 – info@zirkonzahn.com – www.zirkonzahn.com