

Zirkonzahn®

Human Zirconium Technology



IMPLANT PROSTHETICS

All Components from a Single Source



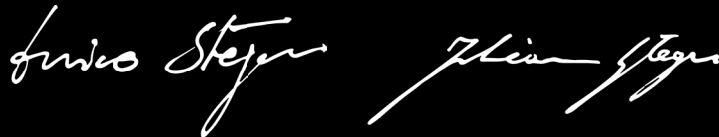
STRONG ROOTS THE POWER OF OUR HOMELAND

A tree with sick roots dies. A man without roots is a man without a homeland who lives in uncertainty. Roots are the guideline that connects us to our land. They indicate where we come from and what is important to us.

They keep us connected with our land, but at the same time they give us strength to evolve, to develop new ideas and plans.

Forgetting where you come from is comparable to closing your eyes and mind and then losing sight of your objectives.

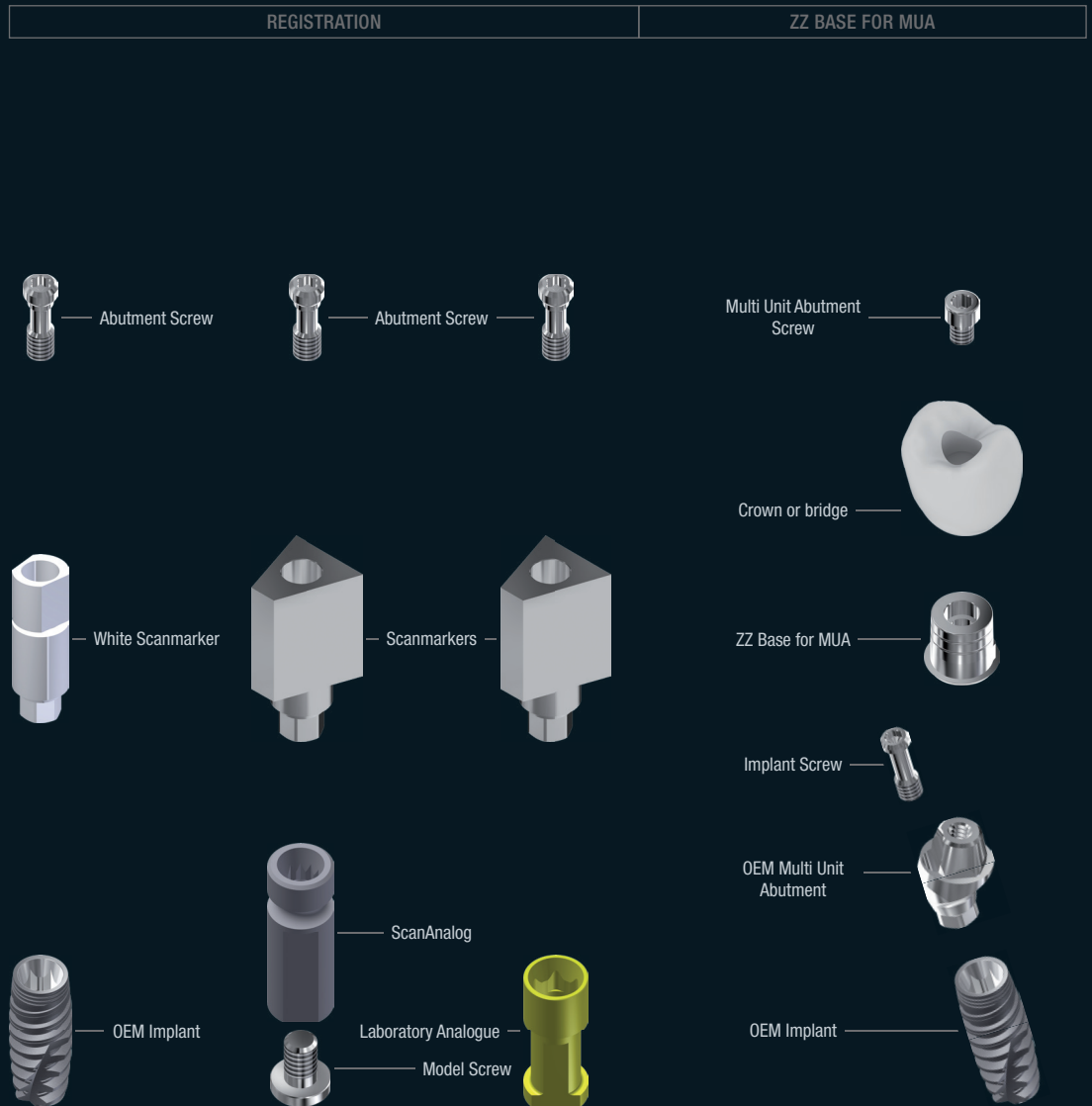
The roots and the attachment to our homeland are the values that drive and encourage us to progress in our line of work – to fight tirelessly and to overcome the obstacles in our paths.




Andrej Stejnar Florian Stejnar

EVERYTHING FROM A SINGLE SOURCE

Especially when manufacturing implant restorations, it is important to optimally adjust components to one another. From the software for planning the position of the implant to analogues for indexing placed implants – we produce and develop everything on our own. All components are available for a variety of implant systems and fully integrated in the Zirkonzahn.Software. With the Zirkonzahn Library Download Center, also 3shape and exocad® users can implement our libraries into their CAD software.



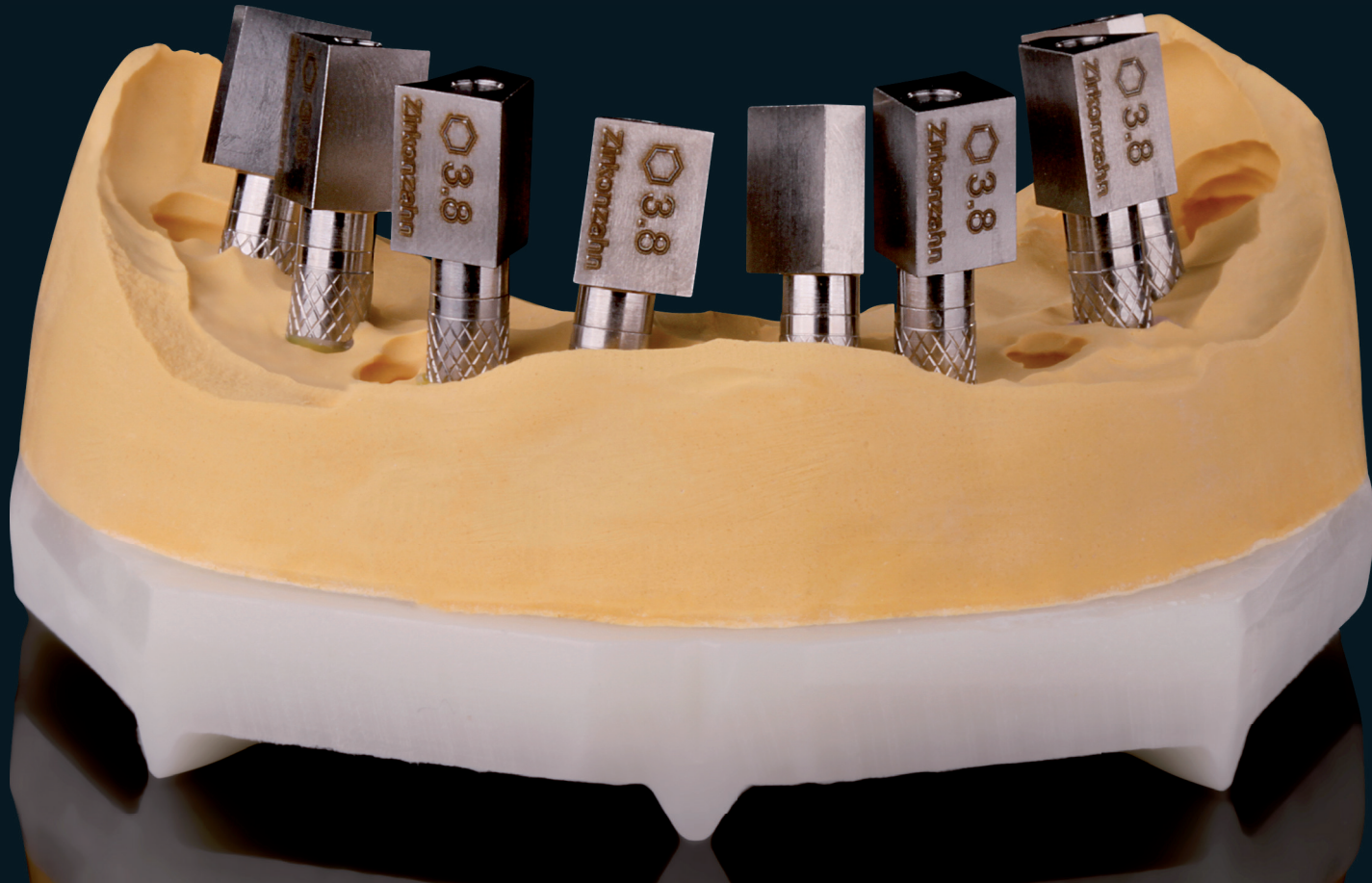
AVAILABLE SYSTEMS

Astra Tech UniAbutment	Astra Tech EV*	BioHorizons Internal*	BioHorizons Multi-Unit Abutment	Biomet 3i Certain*
Camlog Comfour	Camlog Vario SR	Dentium Implantium / Superline*	Dentsply Sirona Ankylos / Balance Base Abutment Narrow	Dentsply Sirona XIVE MP/TG
Implant Direct Legacy*	Medentika Medentibase	Nobel Biocare Branemark	Nobel Biocare NobelActive	Nobel Biocare Multi-Unit Abutment
OSSTEM Implant GS/TS Multi Abutment	Paltop Multi-Unit Abutment	Straumann Bone Level*	Straumann Multibase Abutment	Straumann Screw-Retained Abutment
Straumann Tissue Level*	Zimmer Dental Tapered ScREW-Vent Multi Unit Abutment		The virtual archive is consistently updated with new systems. Overview of available systems in the software: www.zirkonzahn.com/us-implant-systems	

*Scanmarker available only. Information regarding the torque (“Torque table for Zirkonzahn screws”) on www.zirkonzahn.com
 Also our sales team is pleased to answer any questions (T +1 (800) 989-8931).

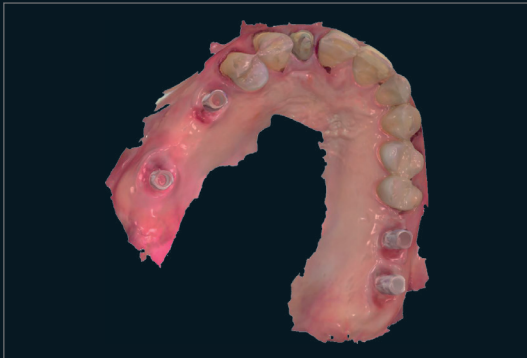
SCANMARKER

Thanks to the special geometry of the Scanmarkers and the precision of the Zirkonzahn scanners, it is possible to transfer the exact position and orientation of the implants from the model into the software.



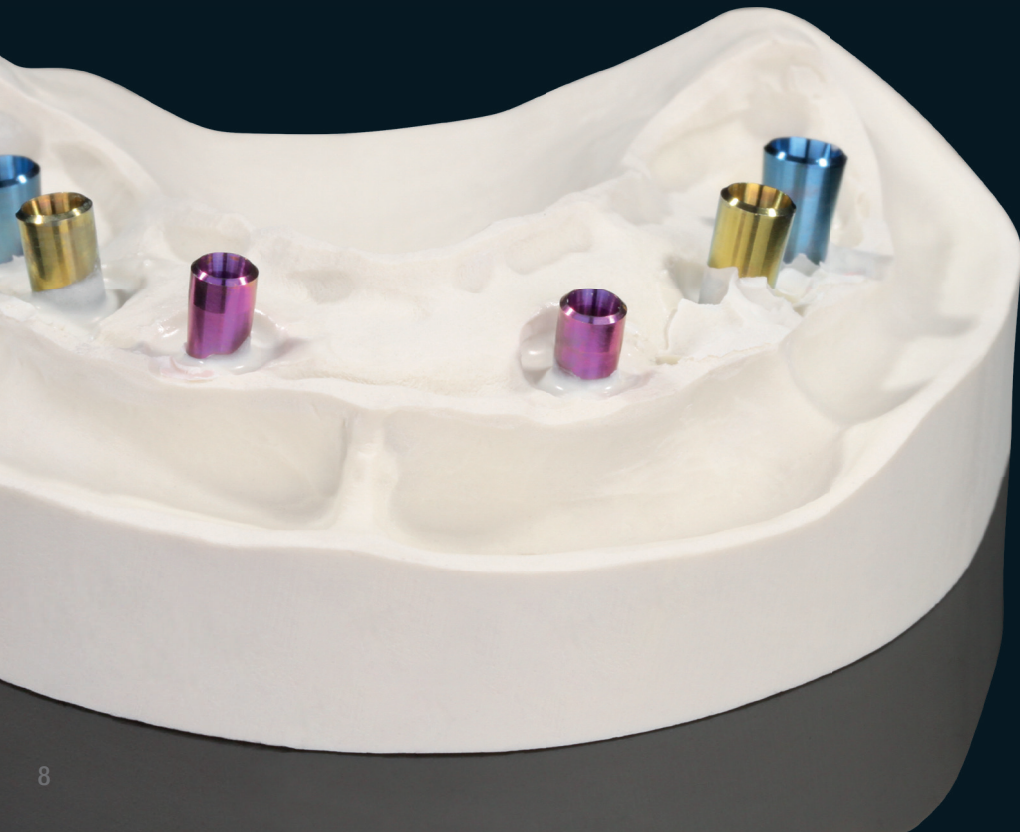
WHITE SCANMARKER

White Scanmarkers are used for scans to capture the position and orientation of the implant. The white surface of the scanbody is not reflective therefore they are especially suitable for the application in the patient's mouth. Since the geometry of the White Scanmarkers is held extremely small, scans are also possible with implants that are positioned very deeply or closely together. White Scanmarkers can also be used as Scanmarkers on the plaster model.



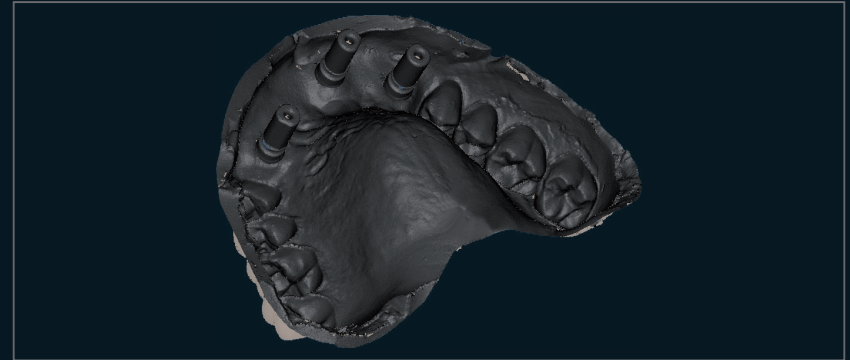
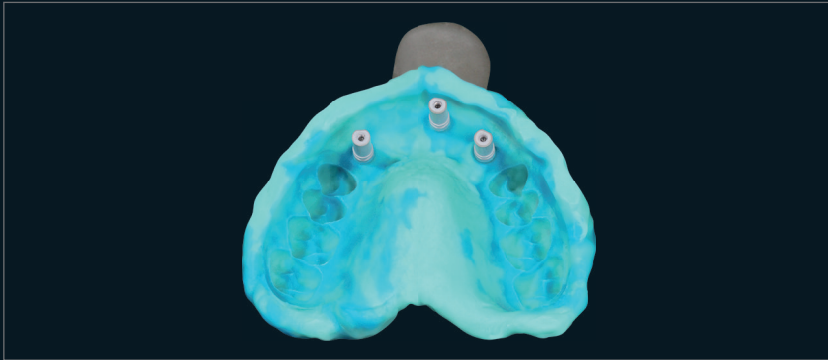
LABORATORY ANALOGUES

The laboratory analogues made from a medical-grade titanium alloy replicate the exact position and connection to the implant. This allows to check the fitting accuracy of the final restoration with implant abutments directly on the model. To distinguish the different diameters, the analogues are also available pre-coloured.



SCANANALOGS

The ScanAnalogues unite the function of a laboratory analogue with the one of a scanmarker. In contrast to conventional scanmarkers, however, ScanAnalogues are scanned directly on the impression, not the model. The ScanAnalogues are screwed onto the traditional impression copings in the impression and digitized with the Zirkonzahn scanner. The captured implant position can be directly transferred into the software without a plaster model. Physical models can then be produced from the acquired data (CAD/CAM Model Maker software module). In their role as laboratory analogues they replicate the exact position and orientation of the implants on the model.



ZZ BASE FOR MUA

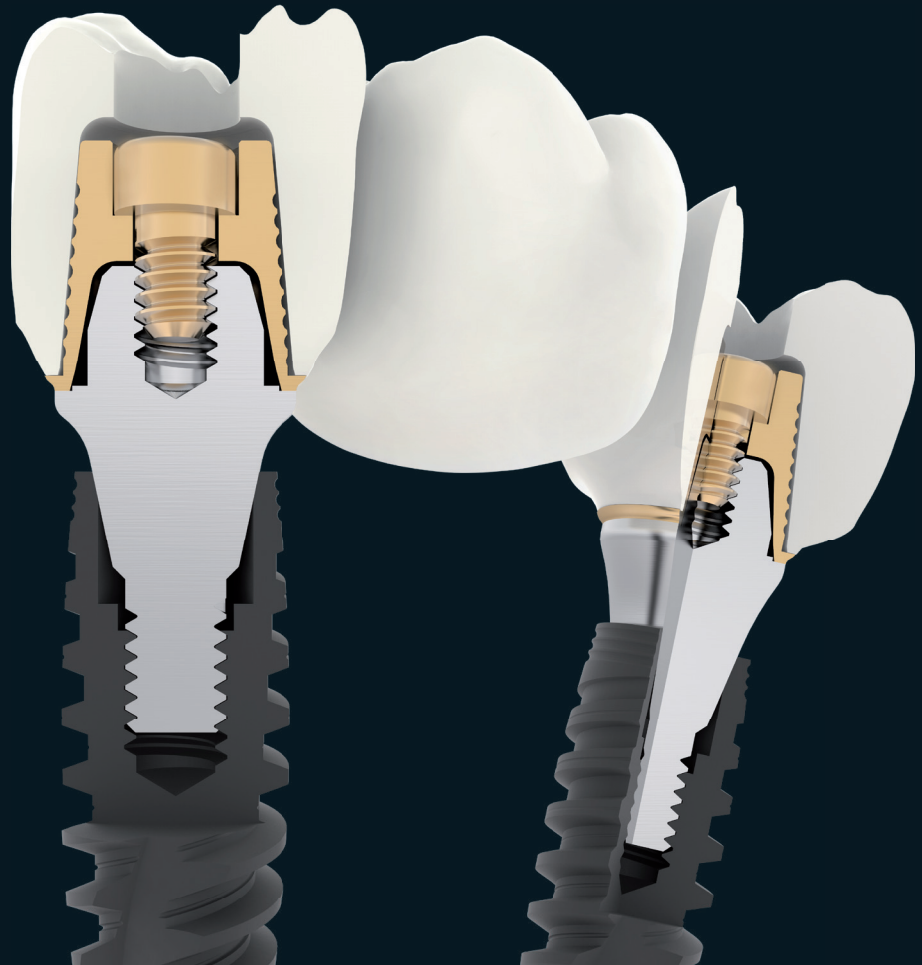
The ZZ BASE FOR MUA are made with medical-grade titanium alloy (Ti-6Al-4V ELI according to ASTM F136 and DIN EN ISO 5832-3) and they are ideal for manufacturing bridges consisting of various elements. The ZZ BASE FOR MUA are optimized with a short and conical design, which facilitates the insertion of the restoration into the mouth. Spiral grooves located on the surface increase the contact area and ensure optimum adhesion of cement.



For multi-unit restorations



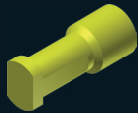
ZZ Base for MUA are used as coping for OEM multi-unit abutments



AVAILABLE SETS

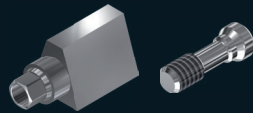
ANALOGUES

Laboratory Analogue



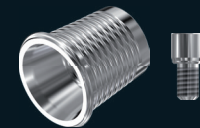
SCANMARKER

Scanmarker + Abutment Screw Metal

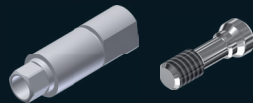


TITANIUM BASES

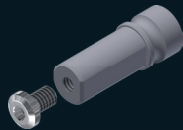
ZZ Base for MUA + Abutment Screw Metal



White Scanmarker + Abutment Screw Metal



ScanAnalog



Zirkonzahn®

IMPLANT PROSTHETICS

Zirkonzahn USA Inc. – Norcross/Georgia (USA) – Phone +1 800 989 8931 – Phone +1 678 441 9419 – infousa@zirkonzahn.com – www.zirkonzahn.com

Zirkonzahn Worldwide – Gais/South Tyrol (Italy) – Phone +39 0474 066 680 – F +39 0474 066 661 – info@zirkonzahn.com – www.zirkonzahn.com



WEAB8115US=

All information is subject to change. Errors and omissions excepted. Version: 18/11/2019